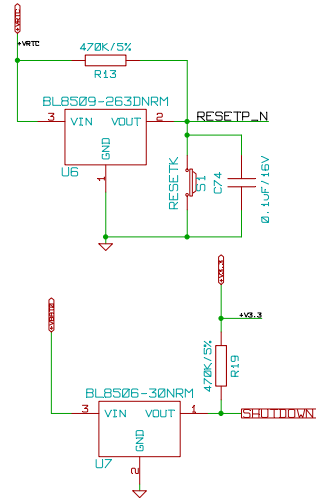
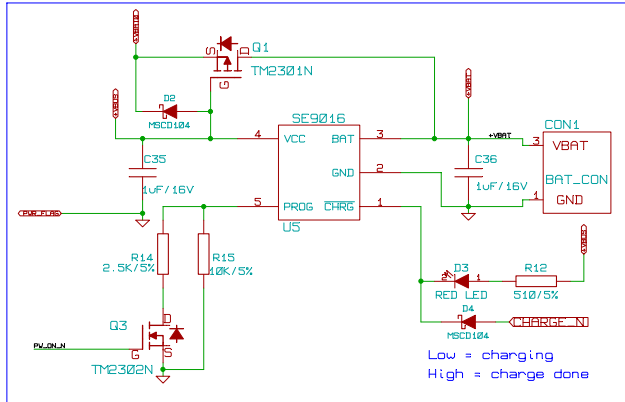


Charge Battery From USB



HIERARCHICAL SHEET

Sheet: FUNCTION_BLOCK

File: function_block.sch

Sheet: MEMORY

File: memory.sch

Sheet: POWER_TREE

File: power_tree.sch

Sheet: LCD_USB

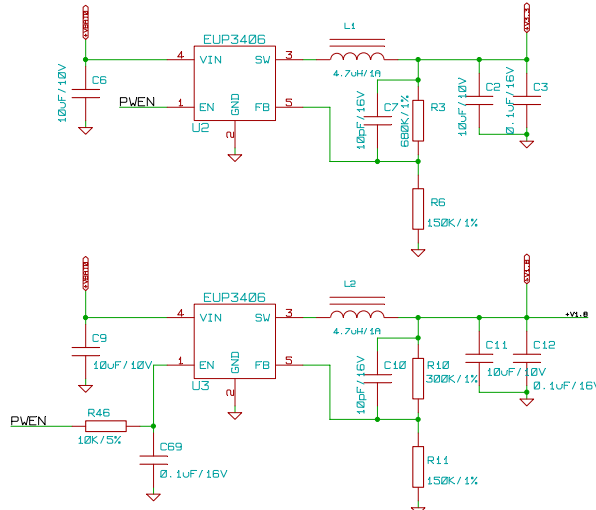
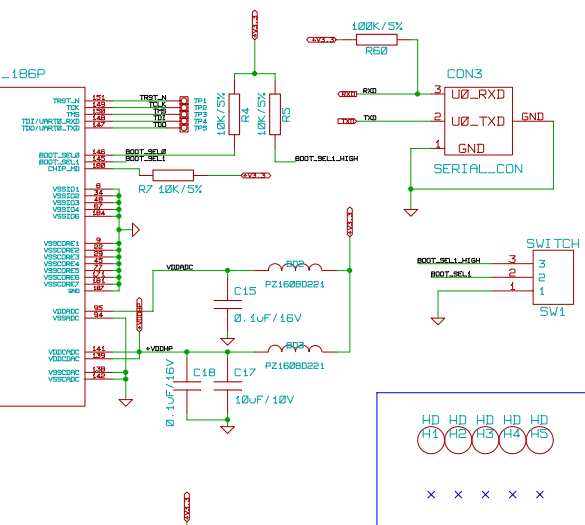
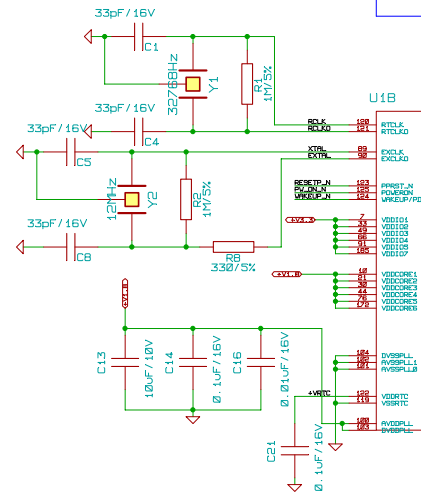
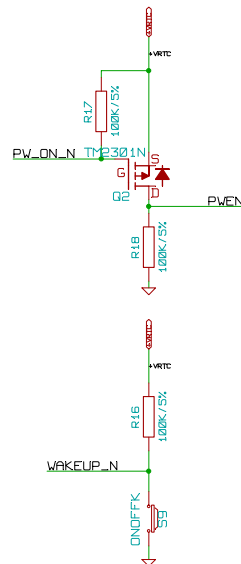
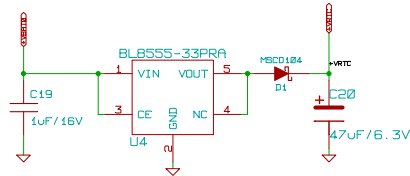
File: lcd_usb.sch

Sheet: AUDIO

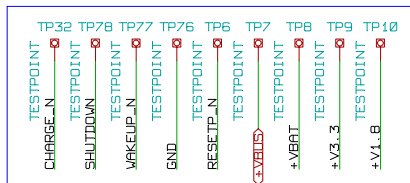
File: audio.sch

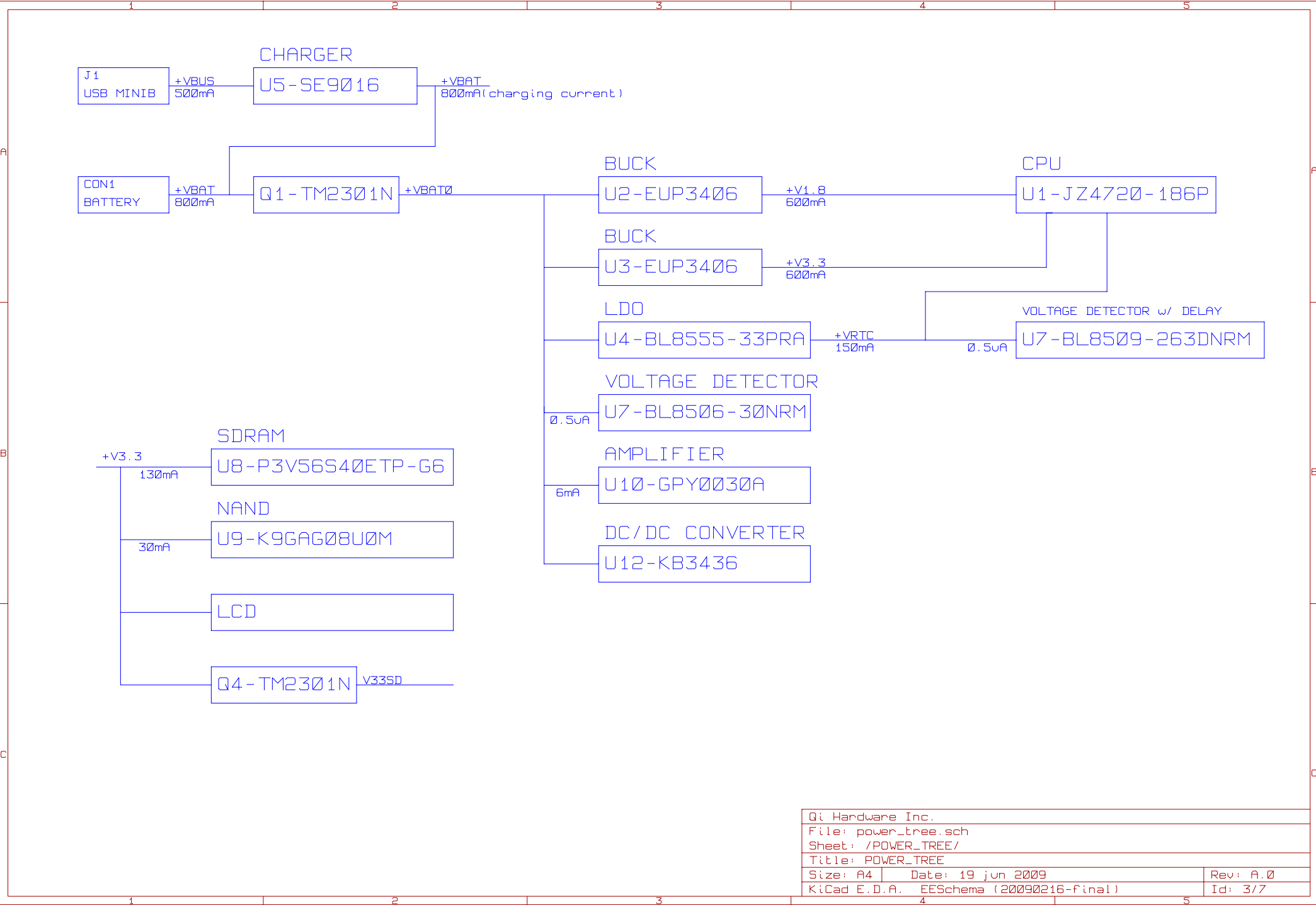
Sheet: KEY_MATRIX

File: key_matrix.sch



Test Points For Power





3.0" TFT LCD
320(H) × RGB × 240(V) delta

SDRAM
32MB/166MHz

NandFlash - 2GB
K9GAG08U0M

MicroSD CARD

Crystal
32768Hz for RTC
12MHz for System

Key Matrix
8 × 8 GPIOs
59 Keys

JZ4720
32bit RISC 336MHz
16KB I cache/16KB D cache
SRAM SDRAM NandFlash I/F
MMU/RTC/WDT/JTAG
Audio codec/SADC
LCD Controller
USB1.1 Host/USB2.0 Device

Microphone

Amplifier AB

8 Ohm Speaker

3.5" Headphone

USB2.0 DEVICE
Mini-B/F

USB1.1 Host
Micro-AB/F

Serial Console /
JTAG TestPoint

Power Block
3.7V 850mAh Li-ion battery
Battery Charger

Qi Hardware Inc.		
File: function_block.sch		
Sheet: /FUNCTION_BLOCK/		
Title: FUNCTION_BLOCK		
Size: A4	Date: 19 Jun 2009	Rev: A.0
KiCad E.D.A. EESchema (20090216-final)		Id: 4/7

