

A

A

B

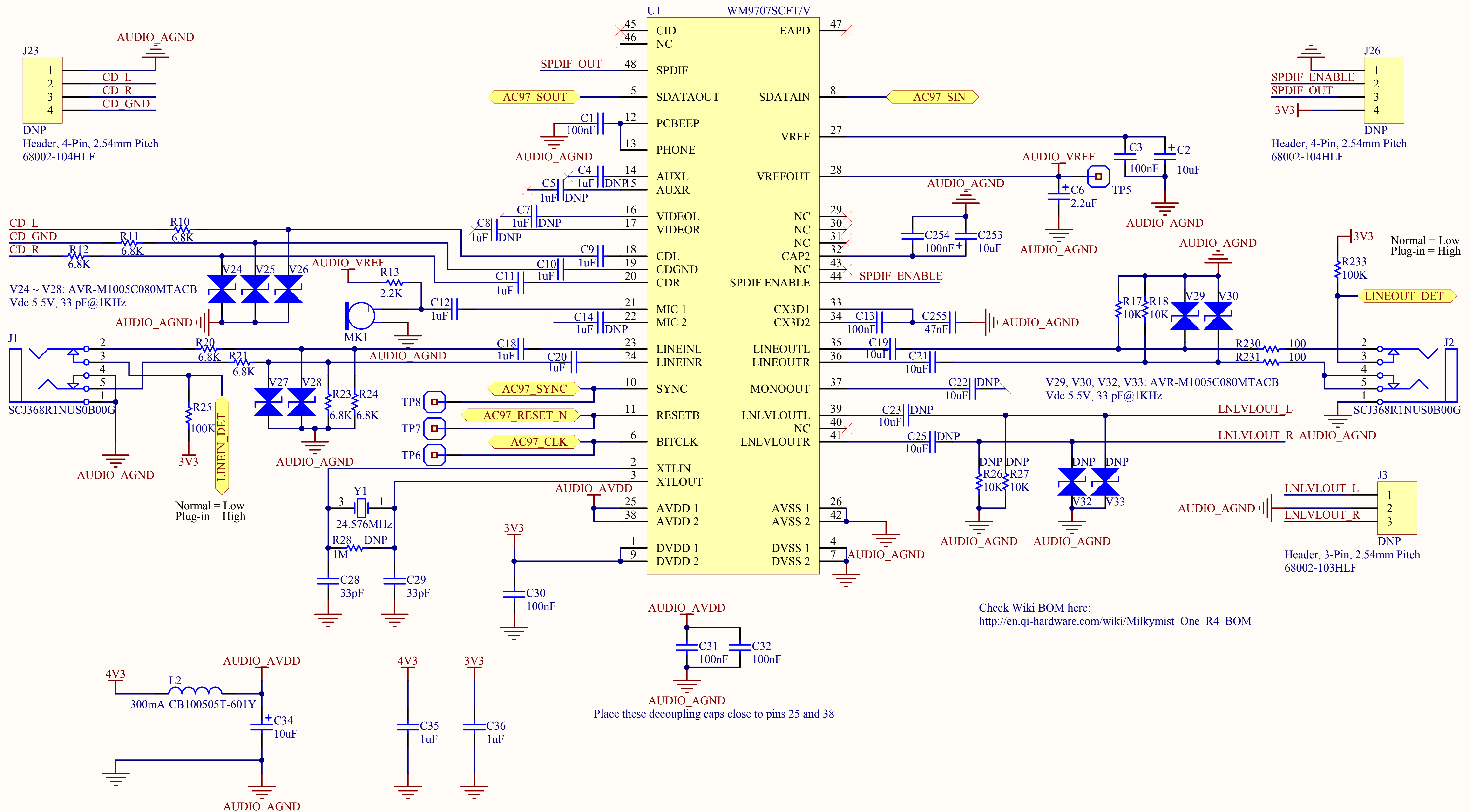
B

C

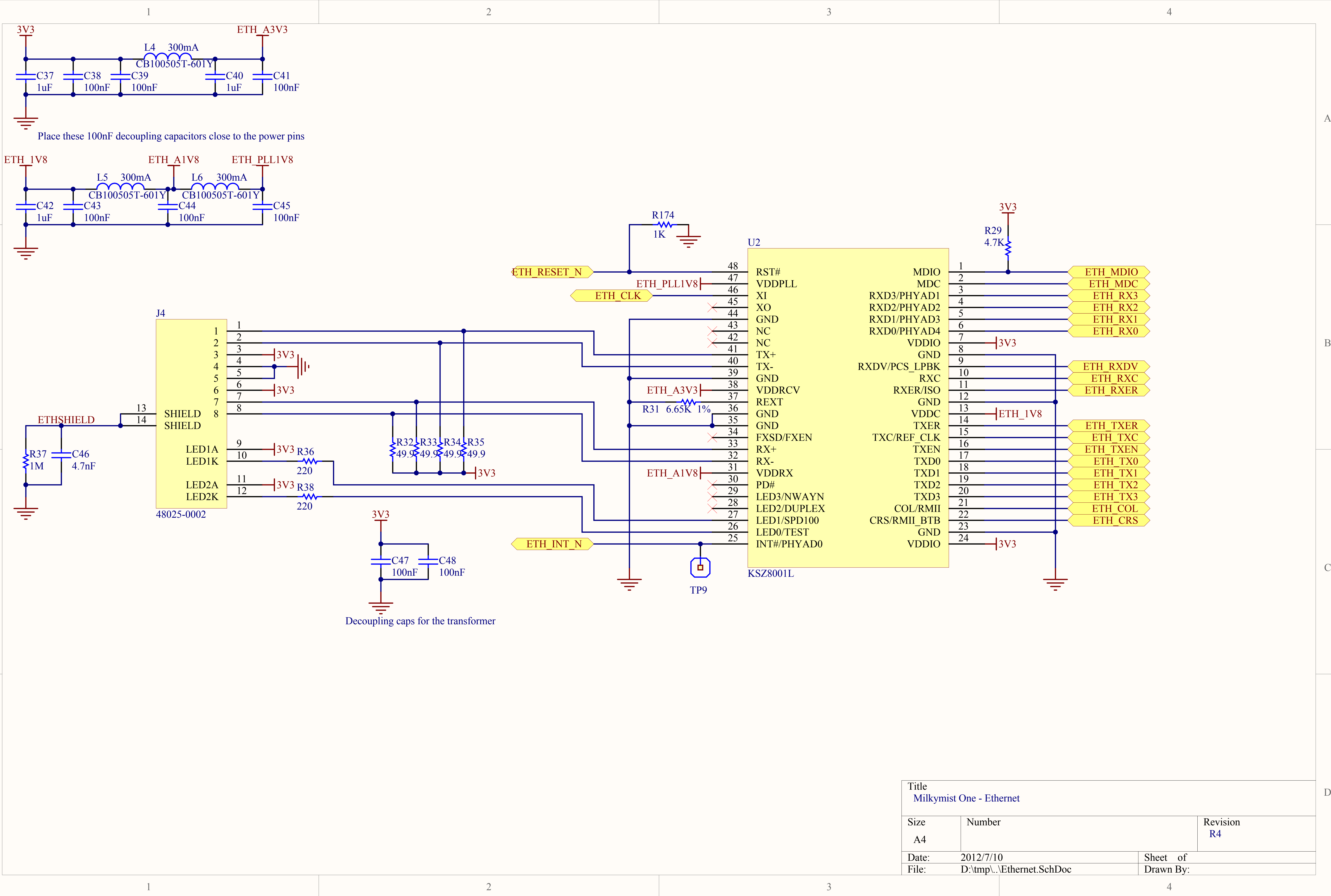
C

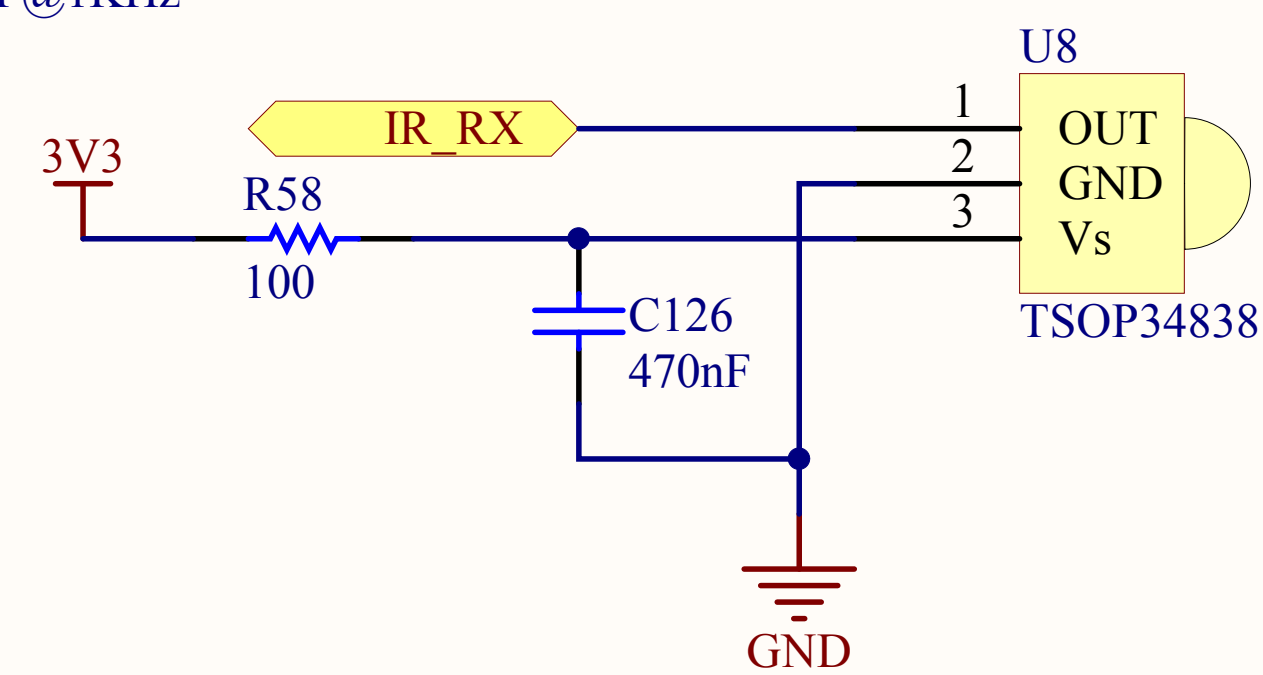
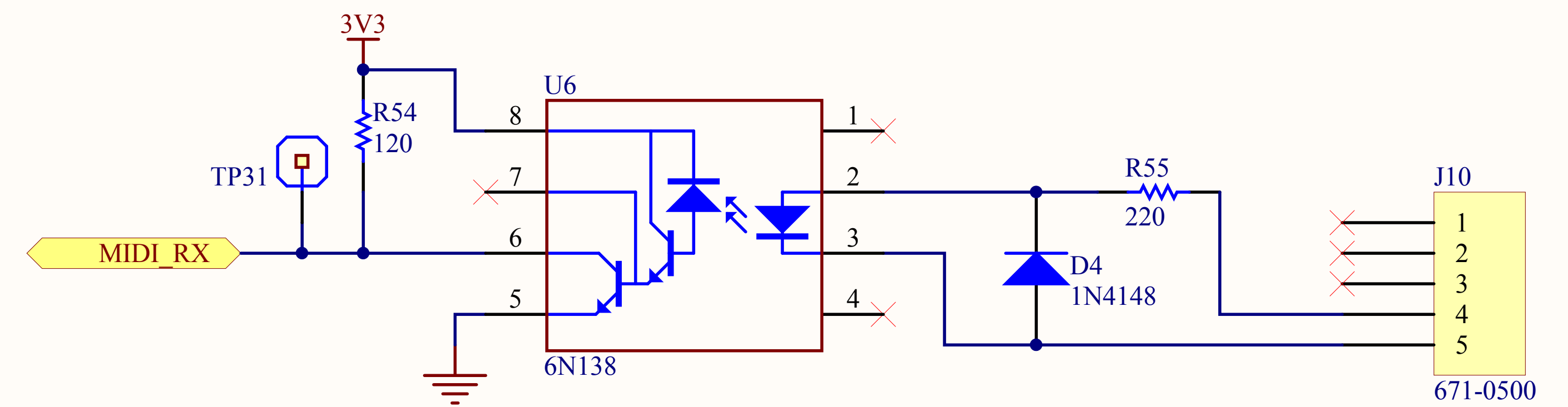
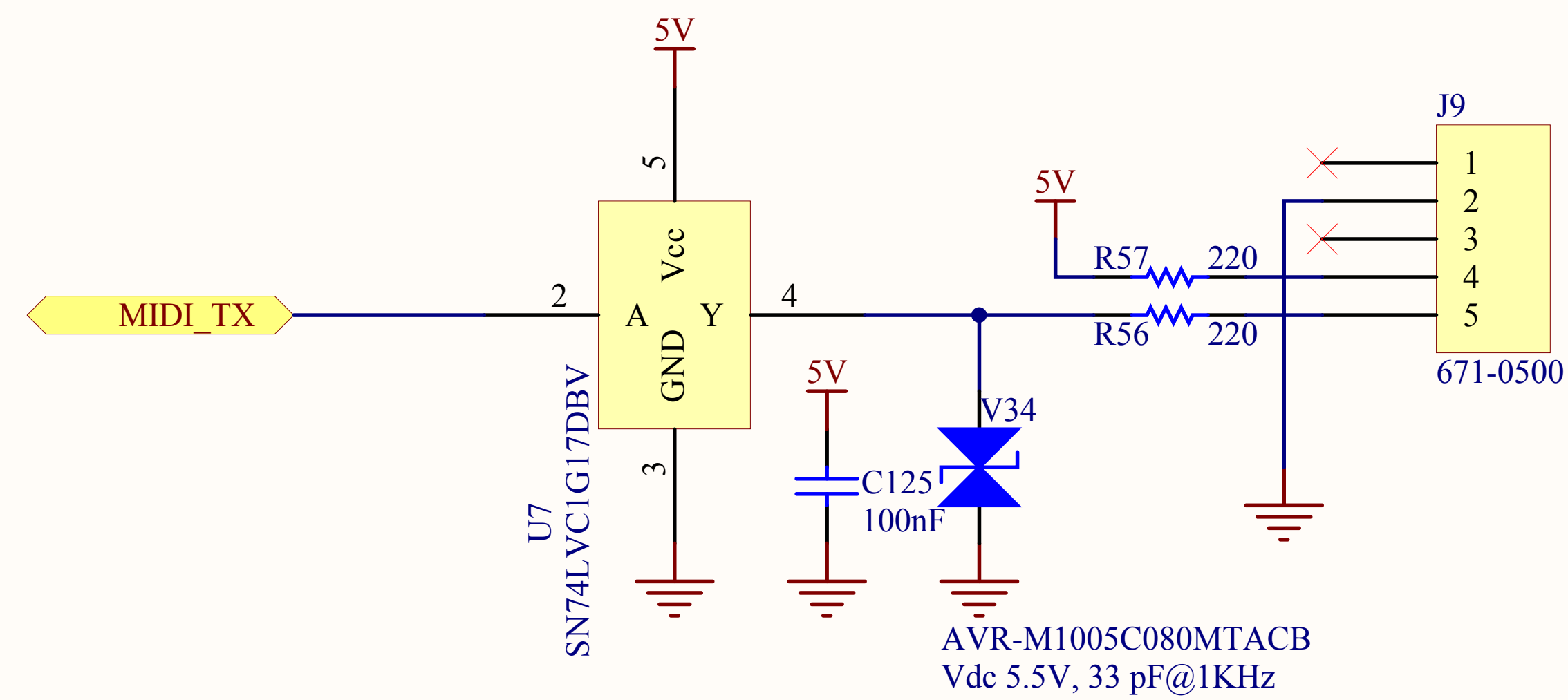
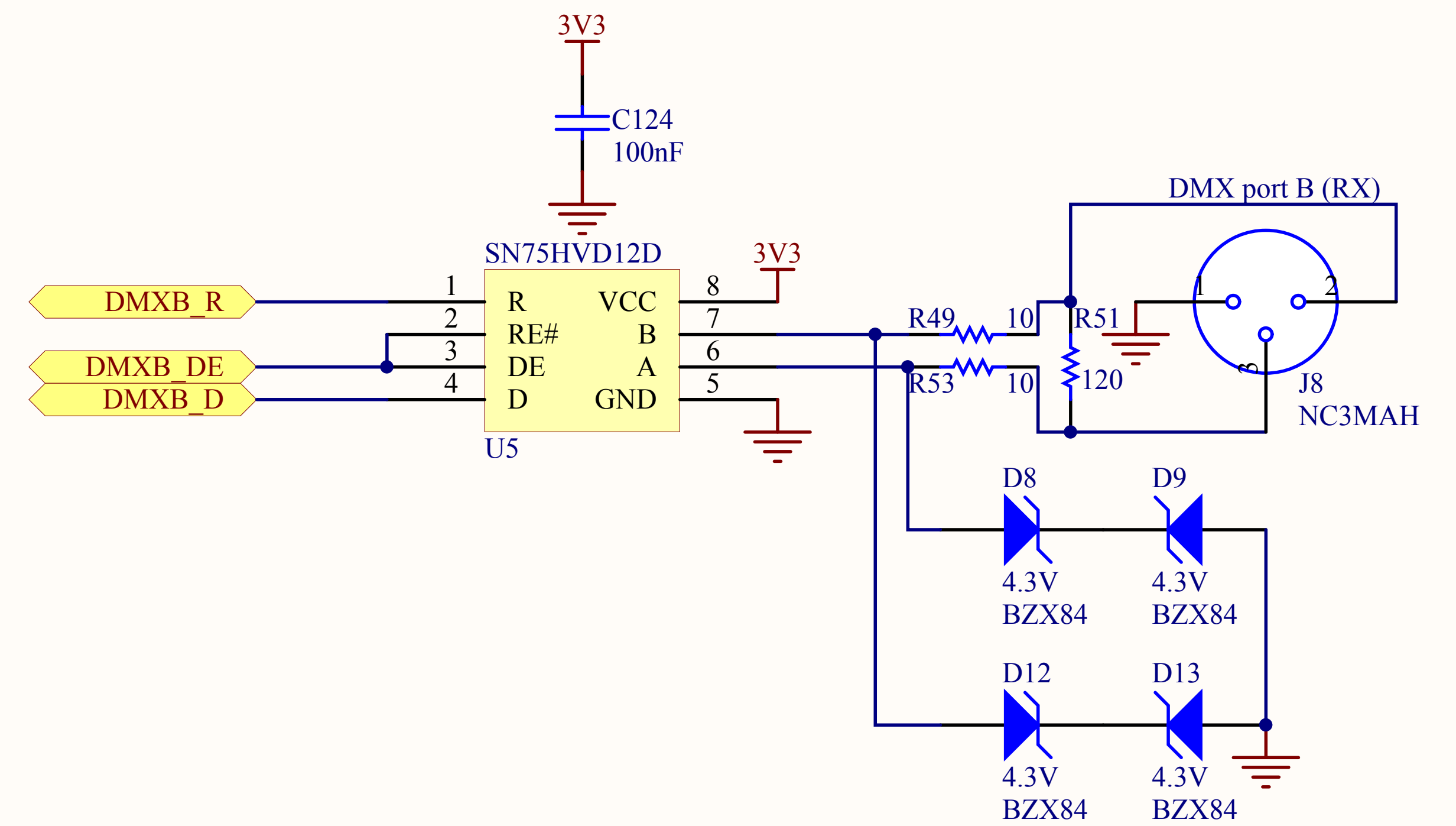
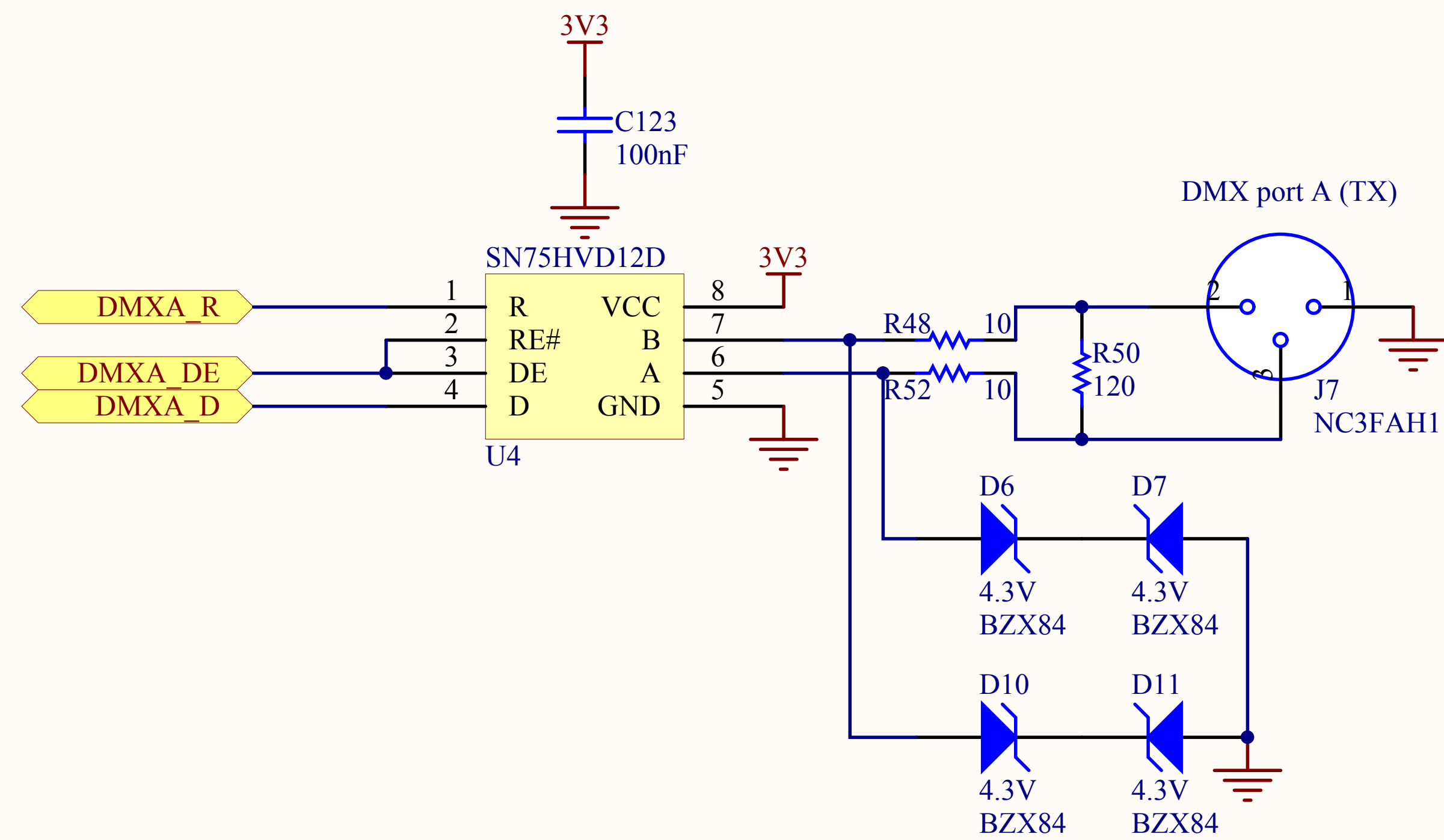
D

D

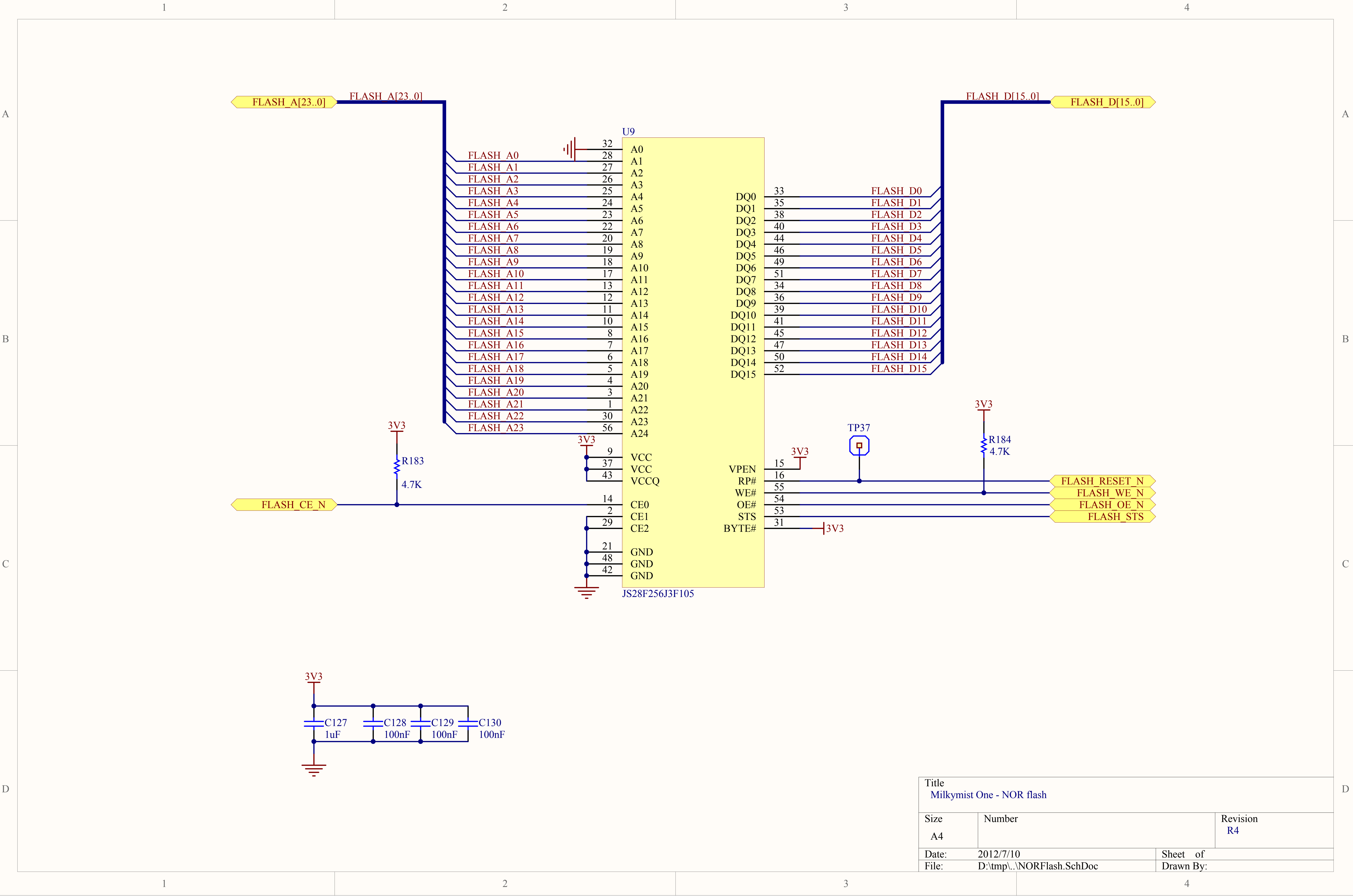


Title Milkymist One - Audio		
Size A4	Number	Revision R4
Date:	2012/7/10	Sheet of
File:	D:\tmp\...\Audio.SchDoc	Drawn By:





Title Milkymist One - MIDI, DMX512 and IR		
Size A4	Number	Revision R4
Date:	2012/7/10	Sheet of
File:	D:\tmp\...\MiscControl.SchDoc	Drawn By:



A

B

C

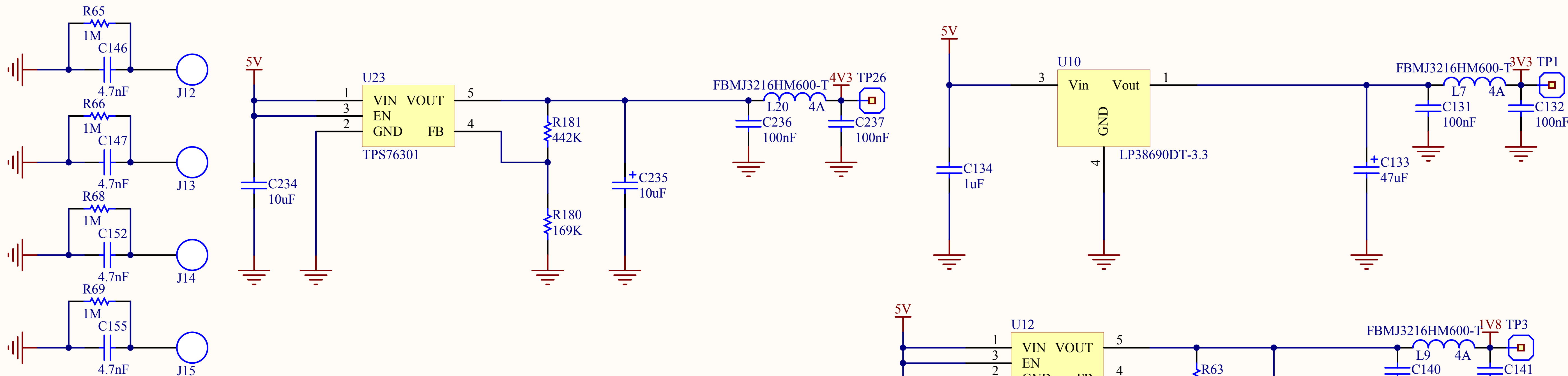
D

A

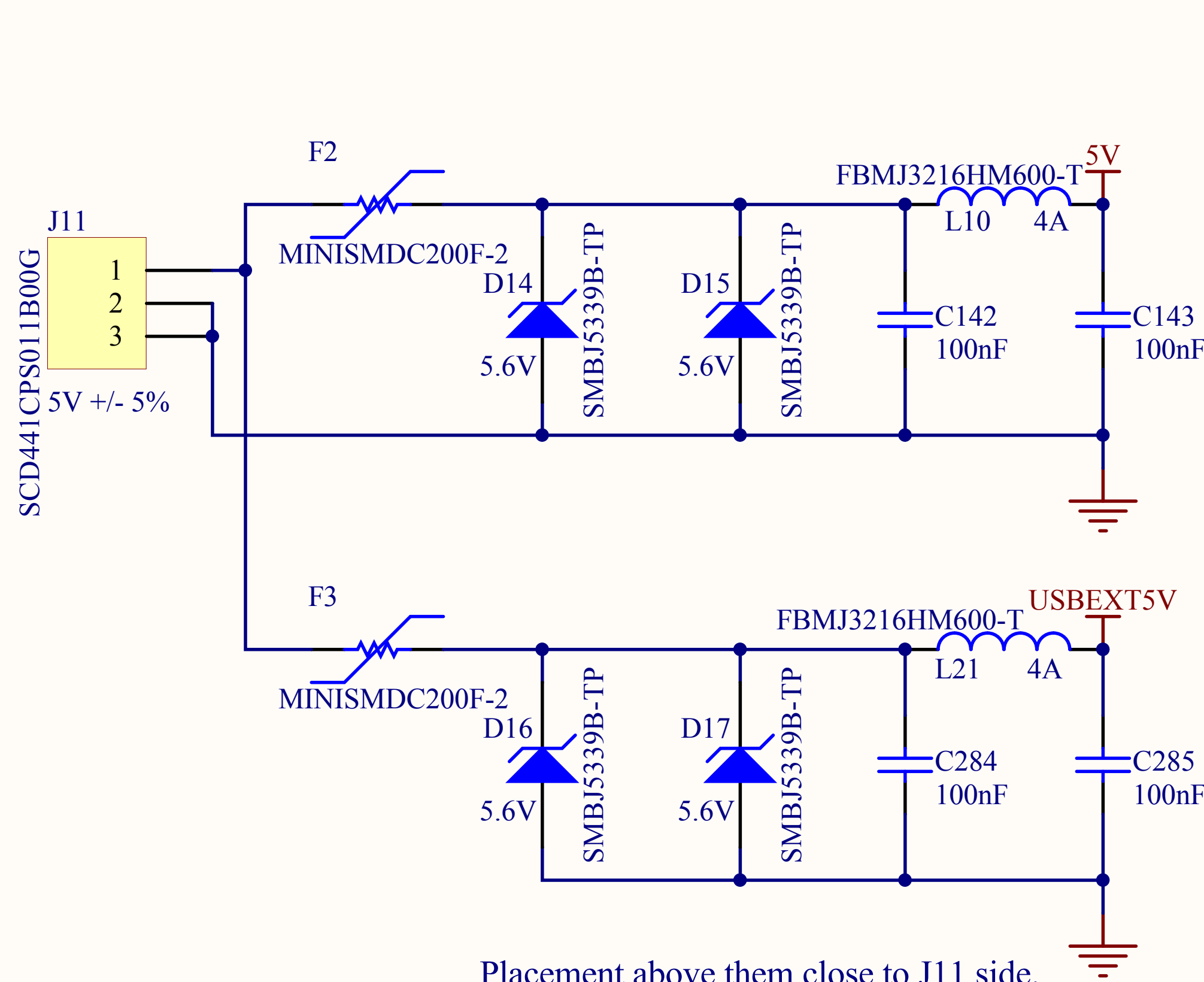
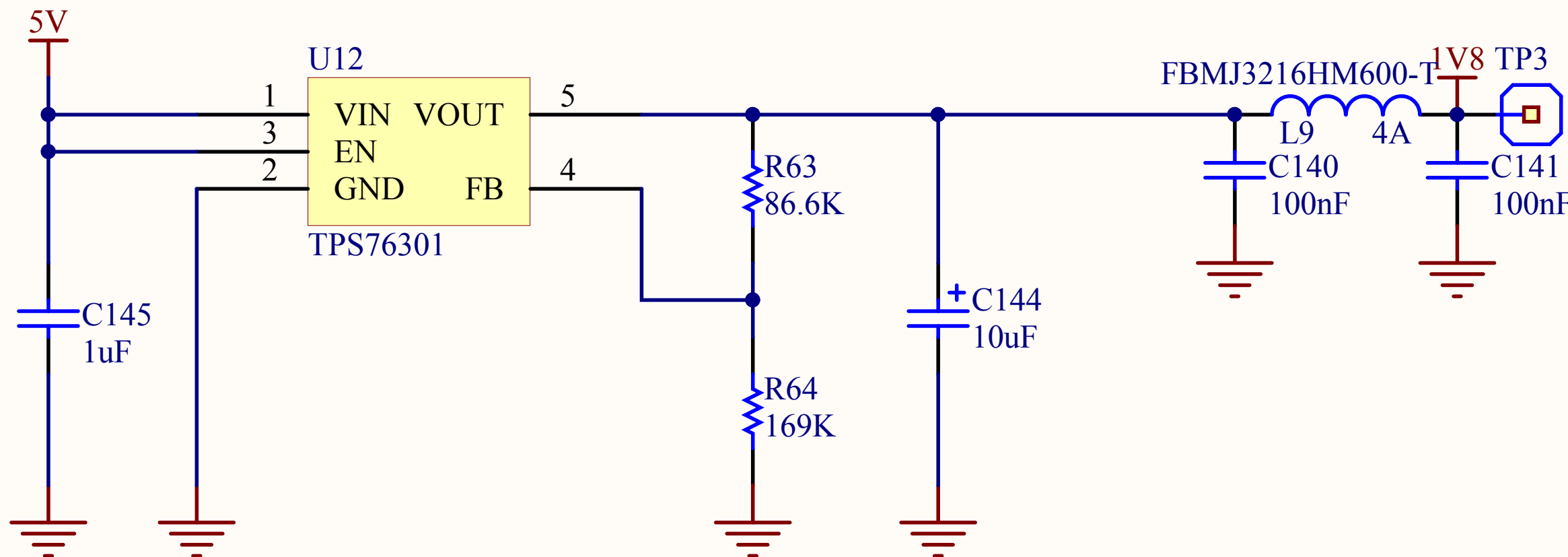
B

C

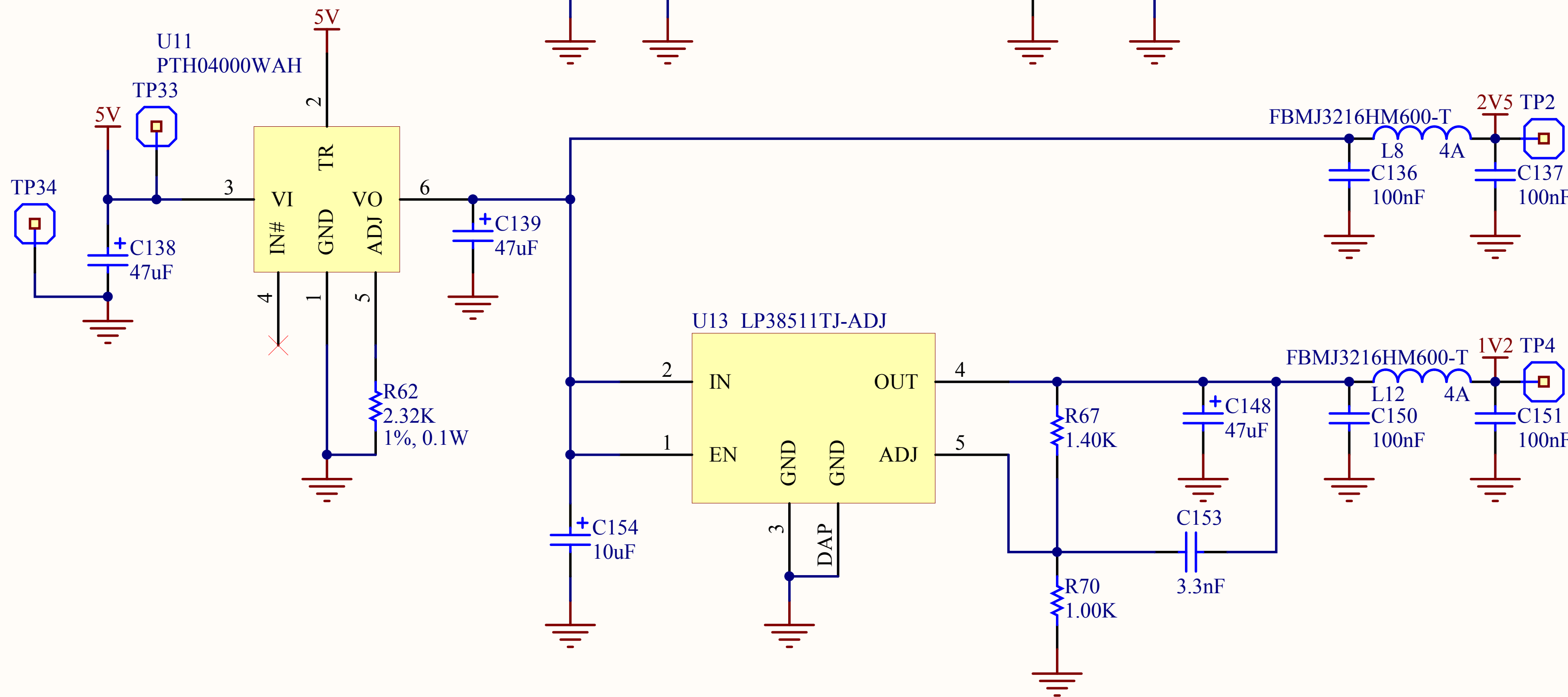
D



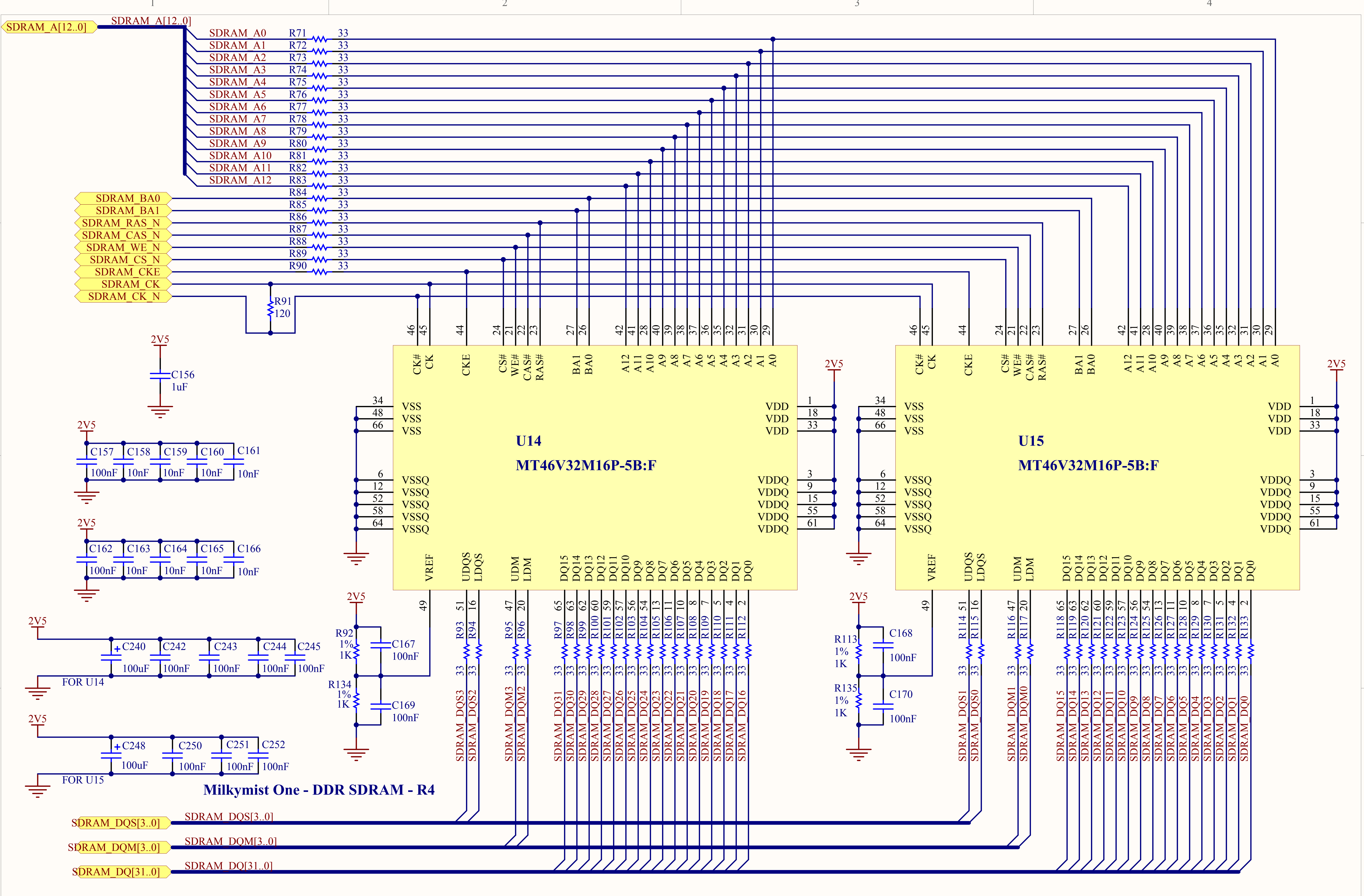
J12~15 are the mechanical mounting holes at each corner of PCB.

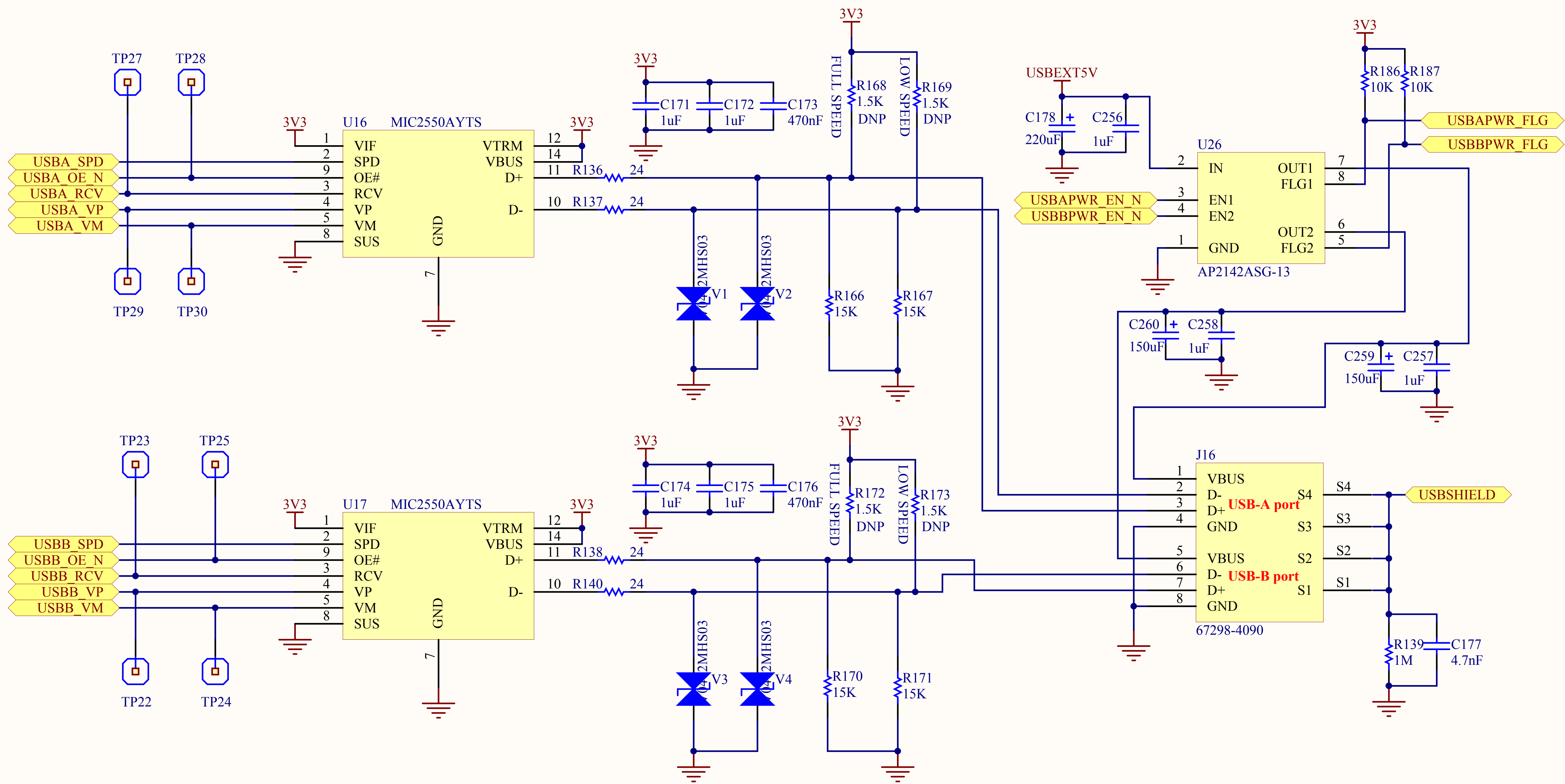


Placement above them close to J11 side.

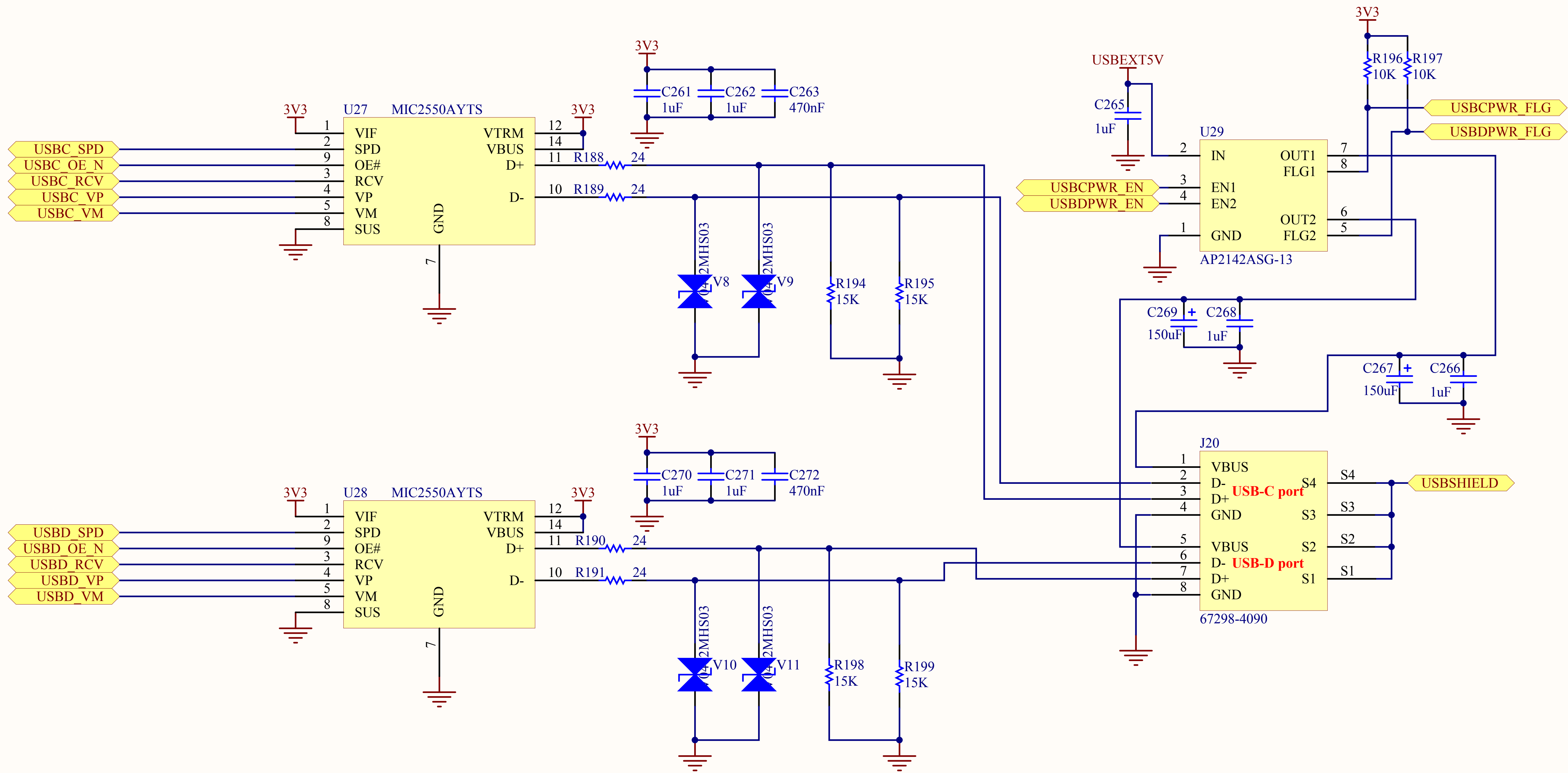


Title Milkymist One - Power Supply		
Size A4	Number	Revision R4
Date:	2012/7/10	Sheet of
File:	D:\tmp\...\Power.SchDoc	Drawn By:

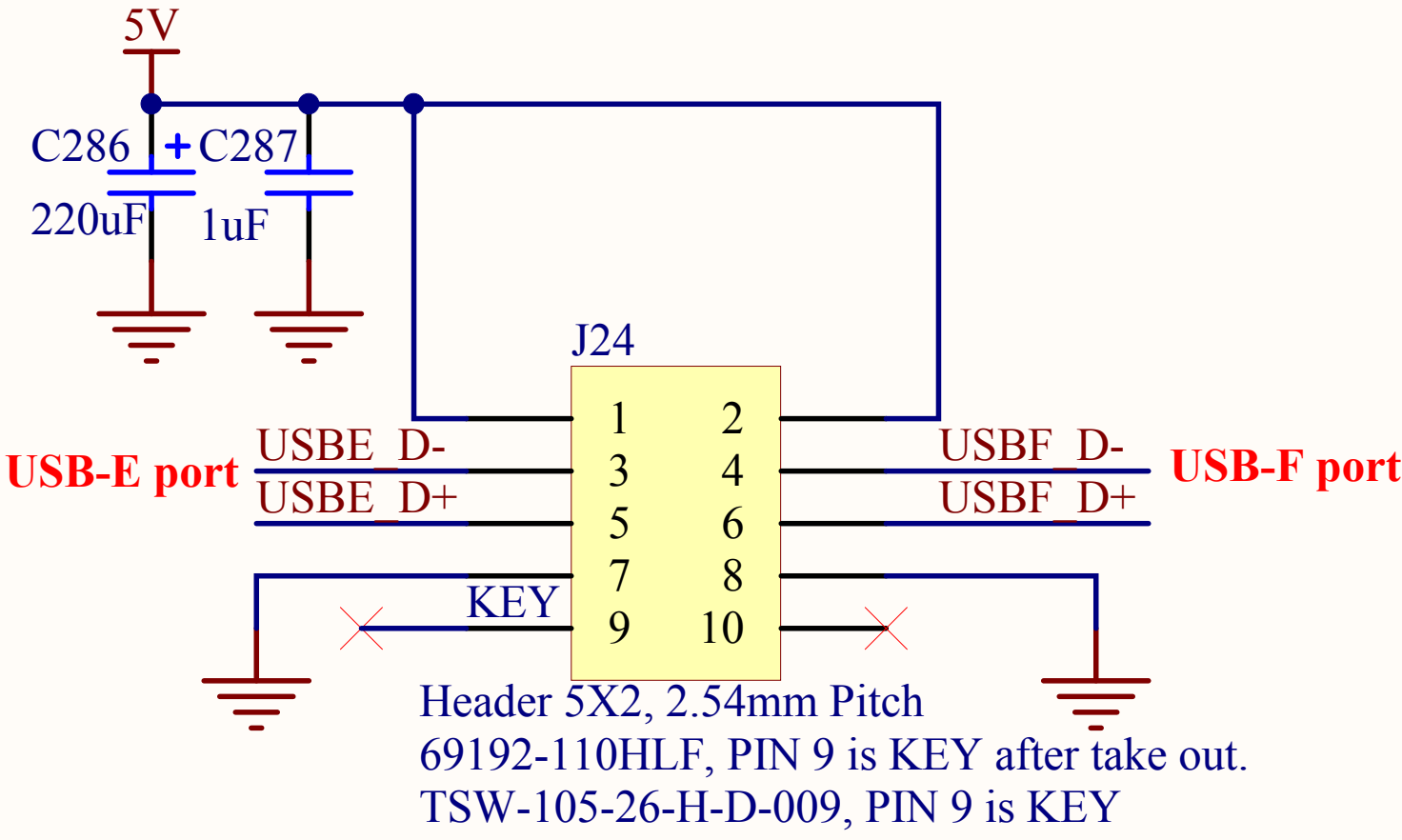
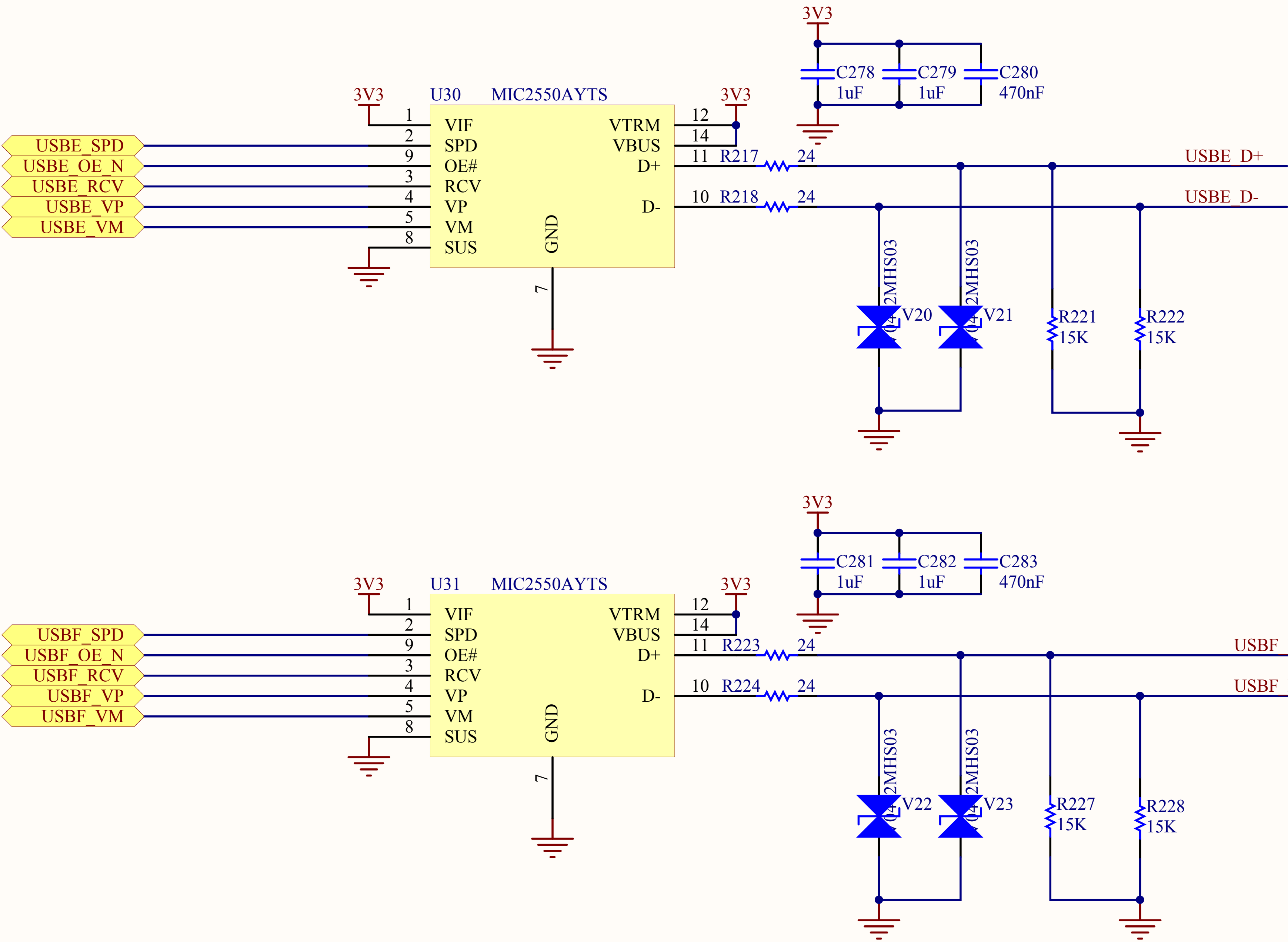




Title Milkymist One - USB A/B port		
Size A4	Number	Revision R4
Date: 2012/7/10	Sheet of	
File: D:\tmp\...\USBExtPorts1.SchDoc	Drawn By:	



Title Milkymist One - USB C/D port		
Size A4	Number	Revision R4
Date: 2012/7/10	Sheet of	
File: D:\tmp\...\USBExtPorts2.SchDoc	Drawn By:	



Title Milkymist One - USB External E/F port		
Size A4	Number	Revision R4
Date: 2012/7/10	Sheet of	
File: D:\tmp\...\USBIntPorts.SchDoc	Drawn By:	

