

A

A

B

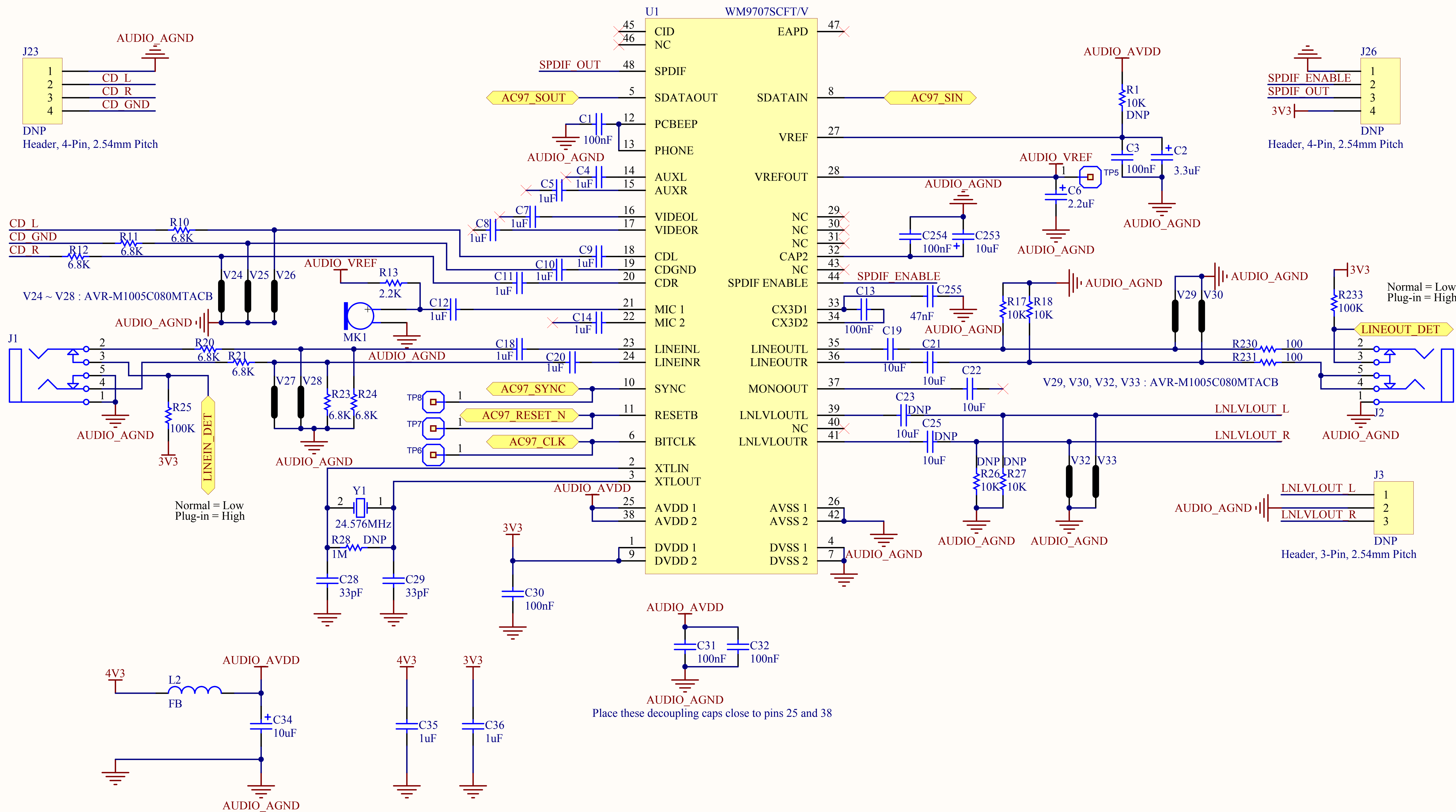
B

C

C

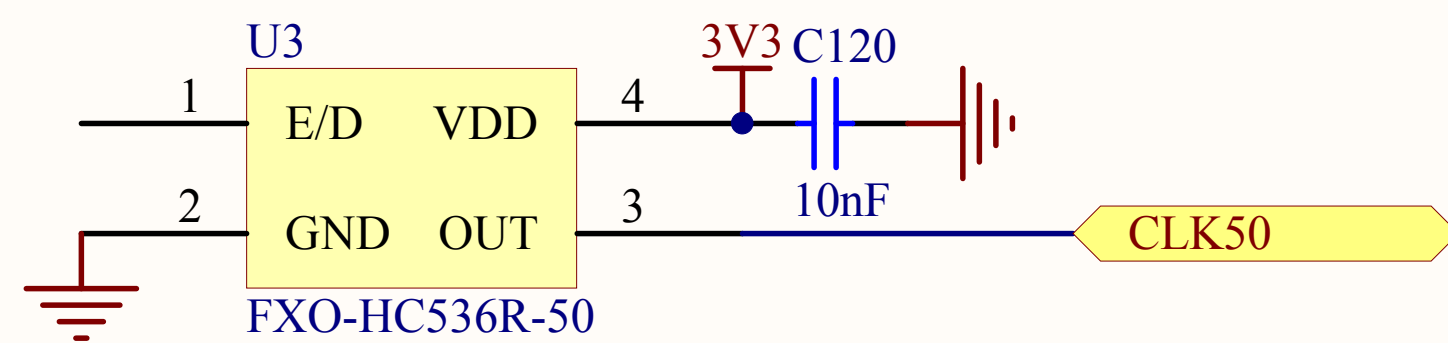
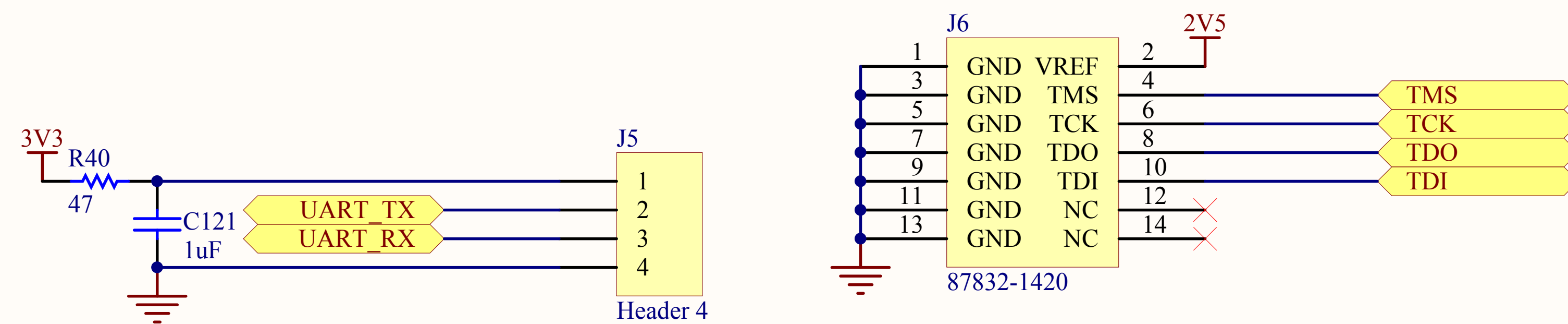
D

D

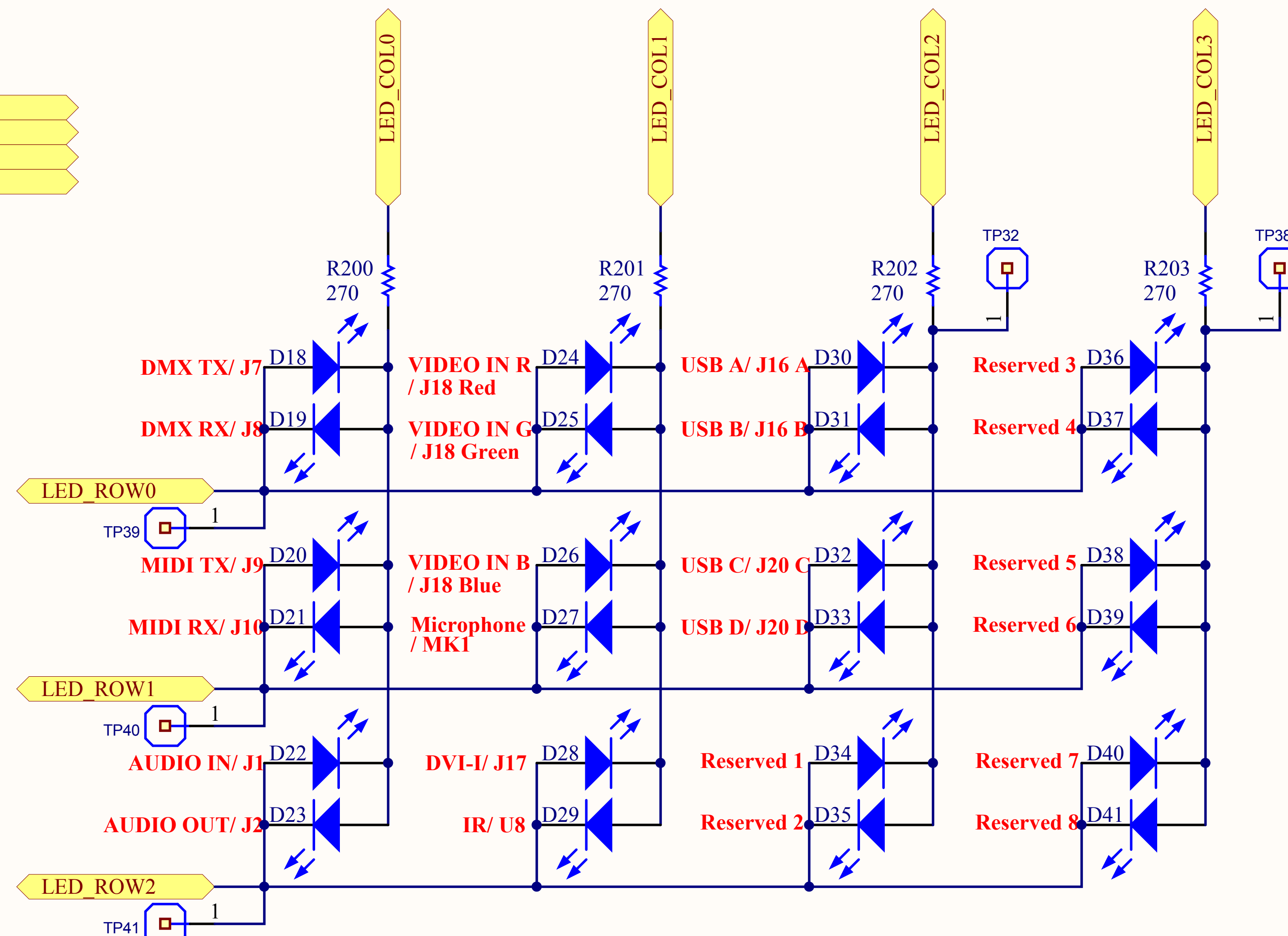
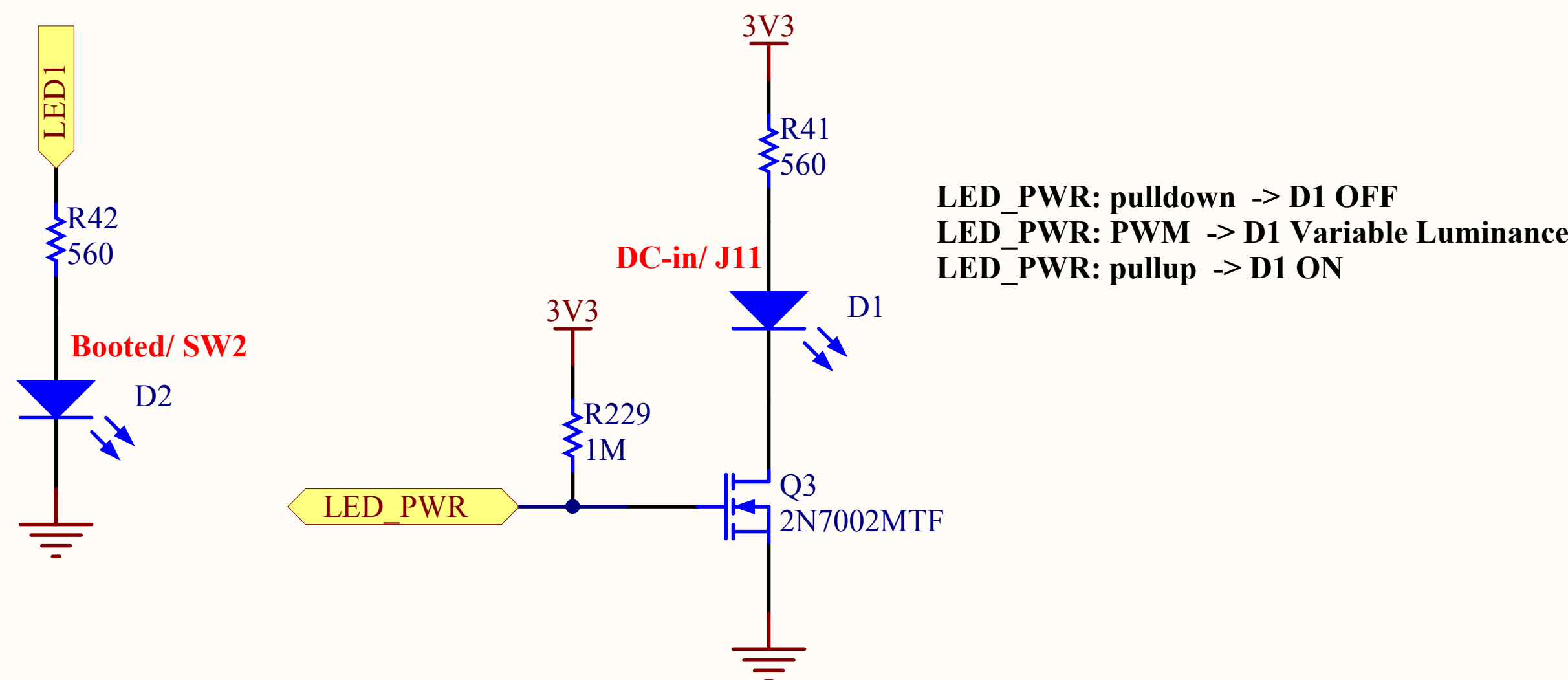


Title Milkymist One - Audio		
Size A4	Number	Revision R4
Date: 2012/3/5	Sheet of	
File: D:\rc4_design\Audio.SchDoc	Drawn By:	

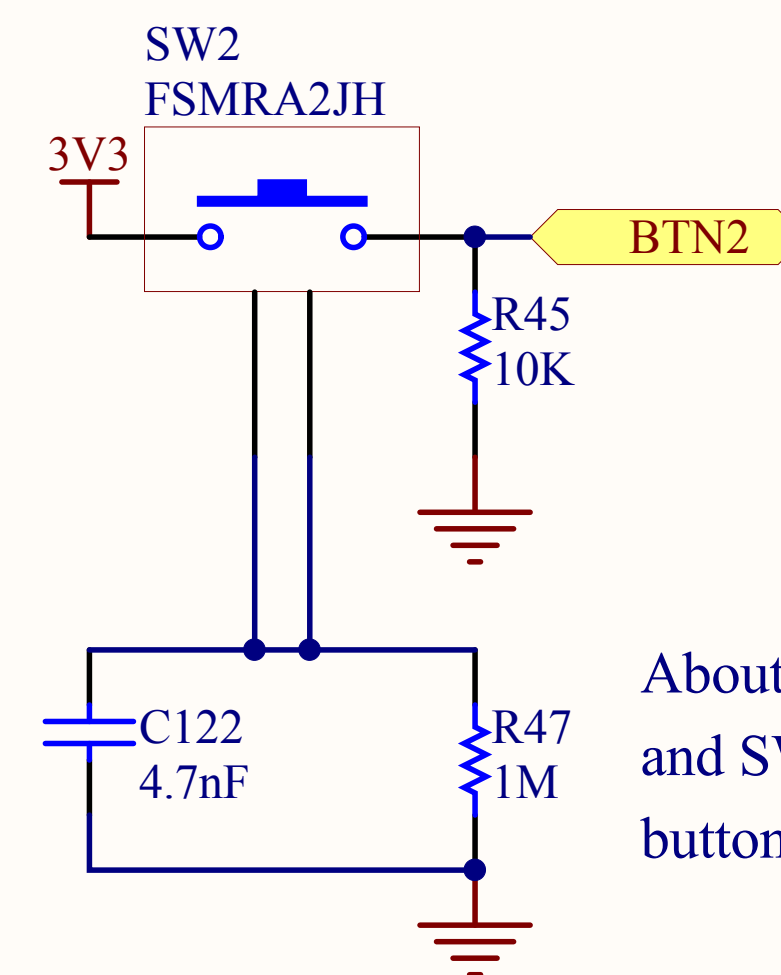
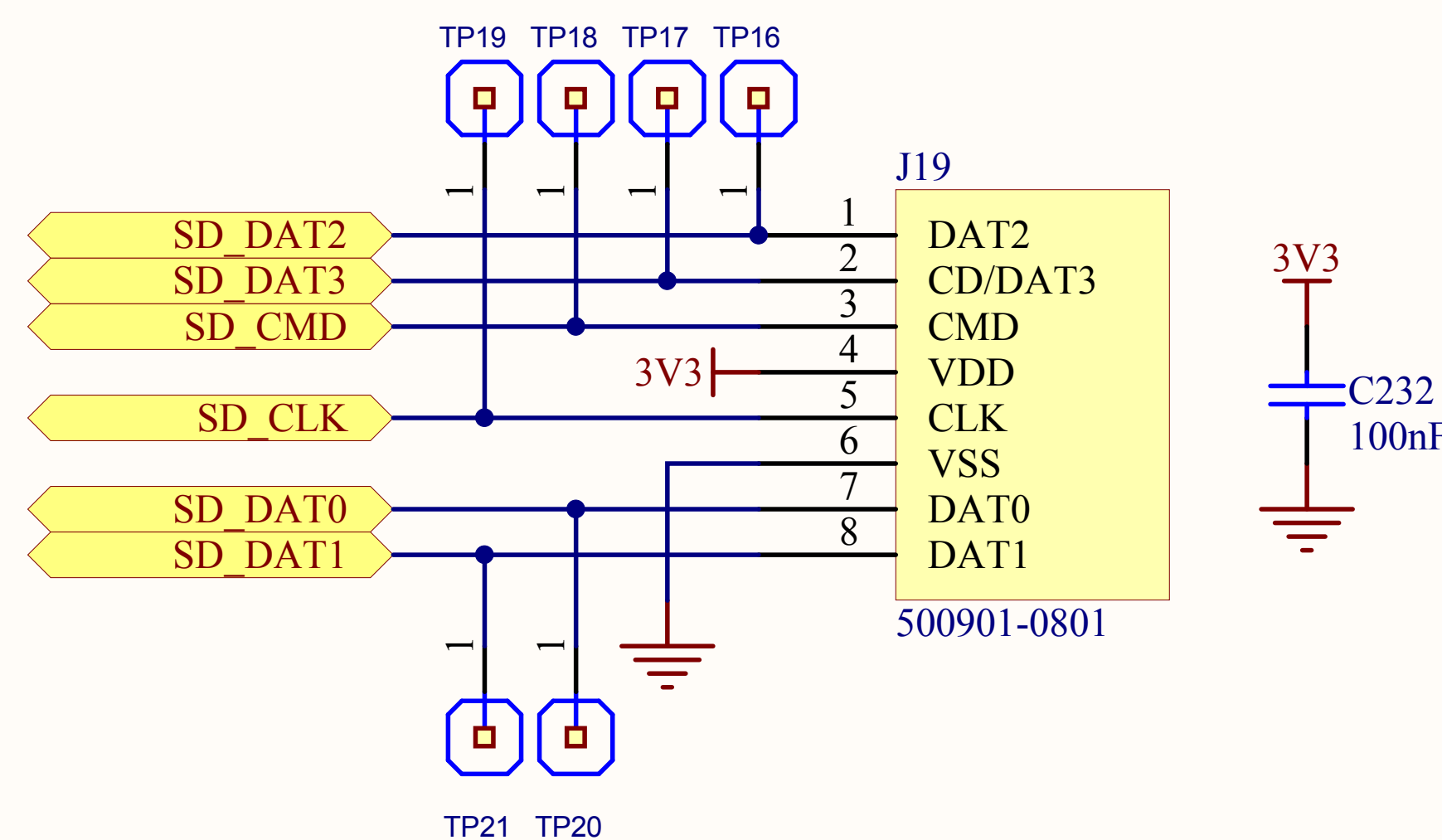




D1 and D2 are on pcb bottom side and in hyper red color of p/n: APA1606SURCK
And D2 is under SW2 button and D1 is under J11 DC jack connector

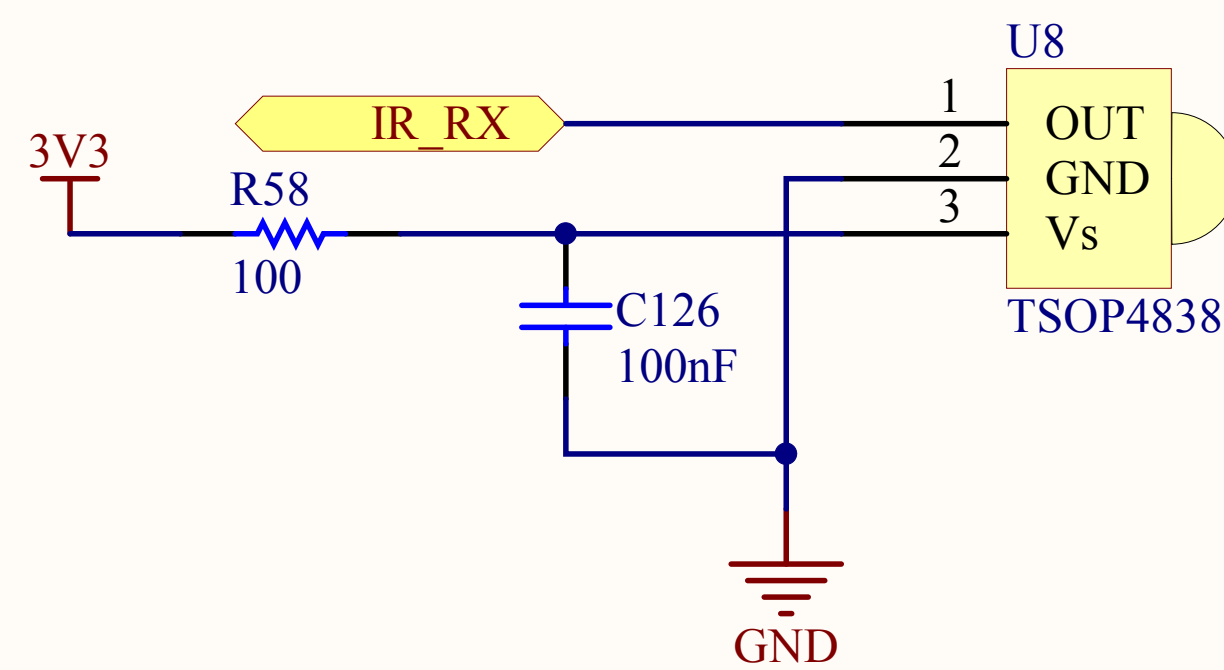
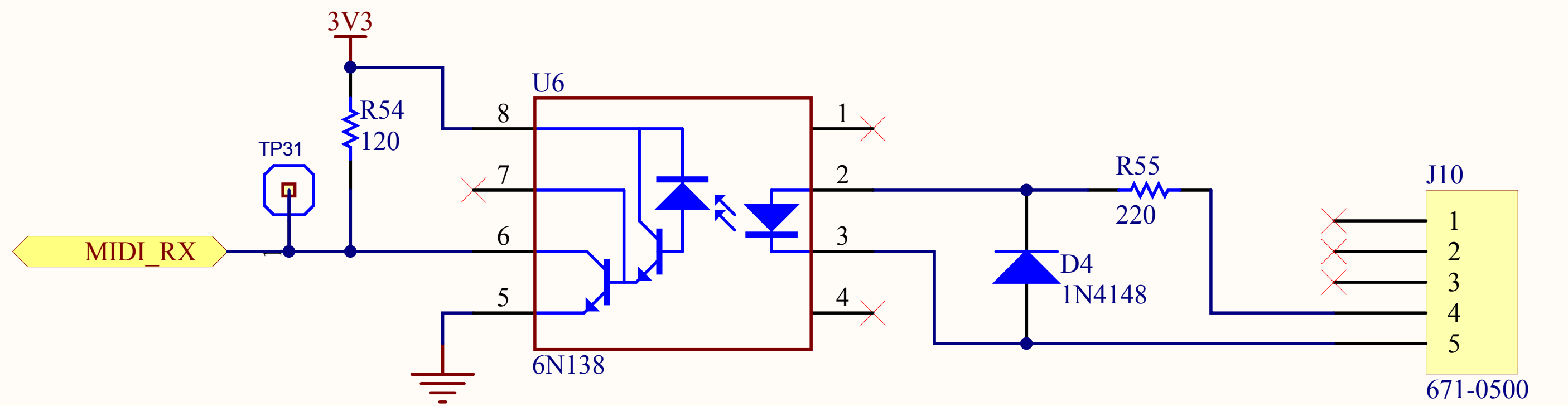
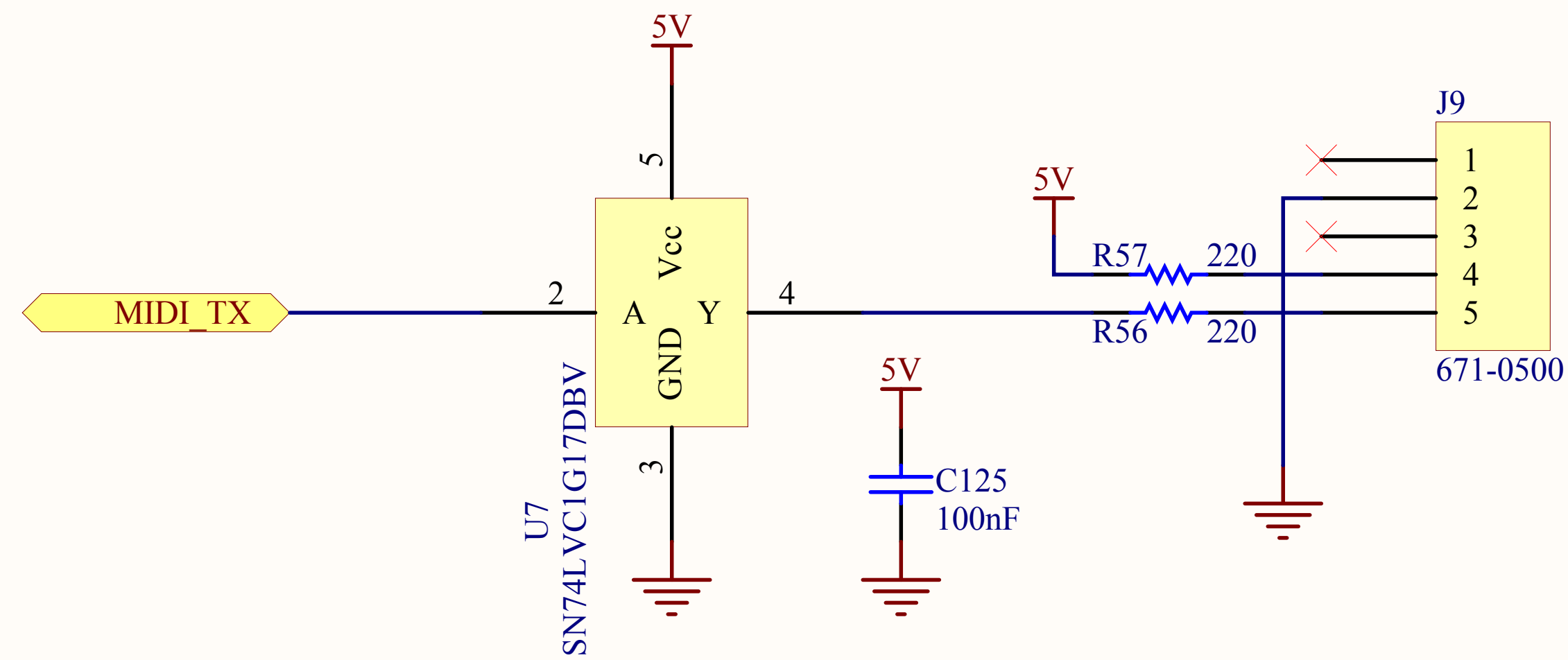
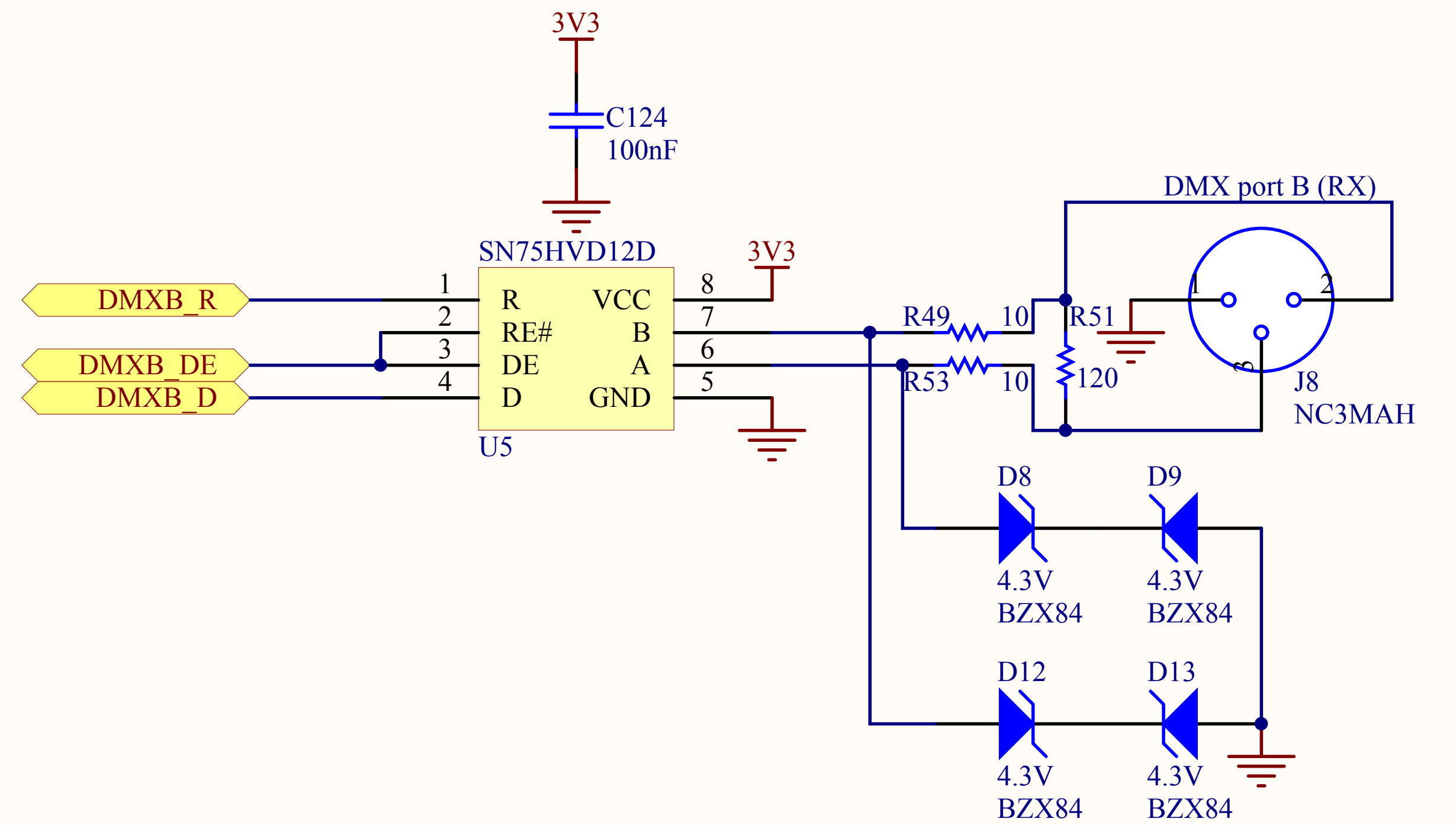
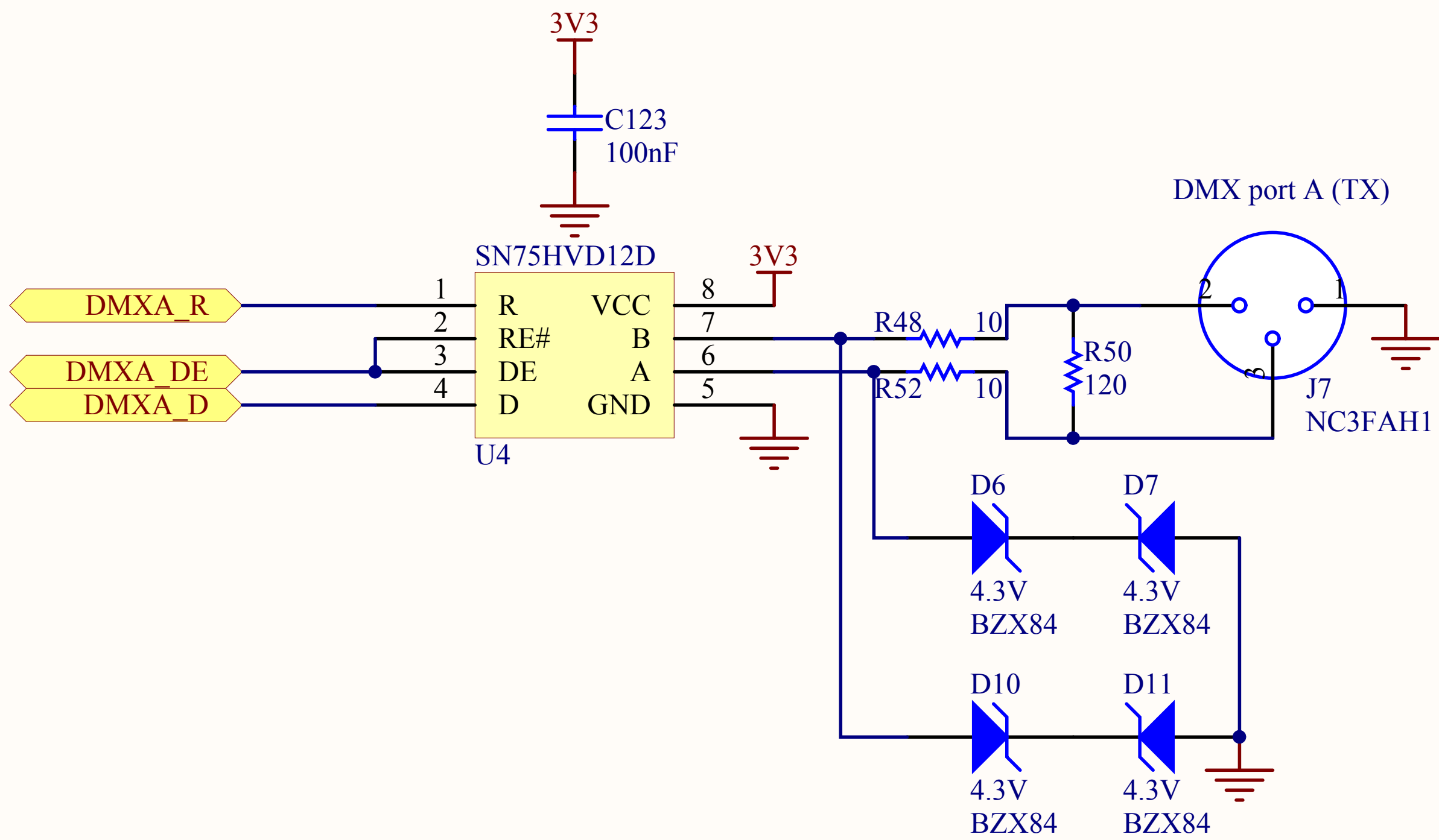


1. D18 ~ D41 is p/n: APA1606SURCK Hyper Red color
2. Placement LEDs above on bottom side of PCB and under corresponding connector.

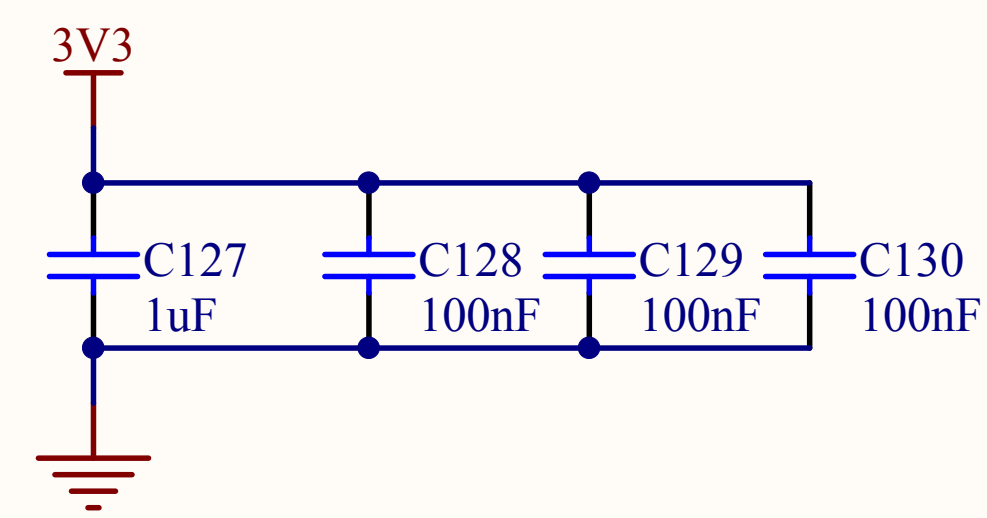
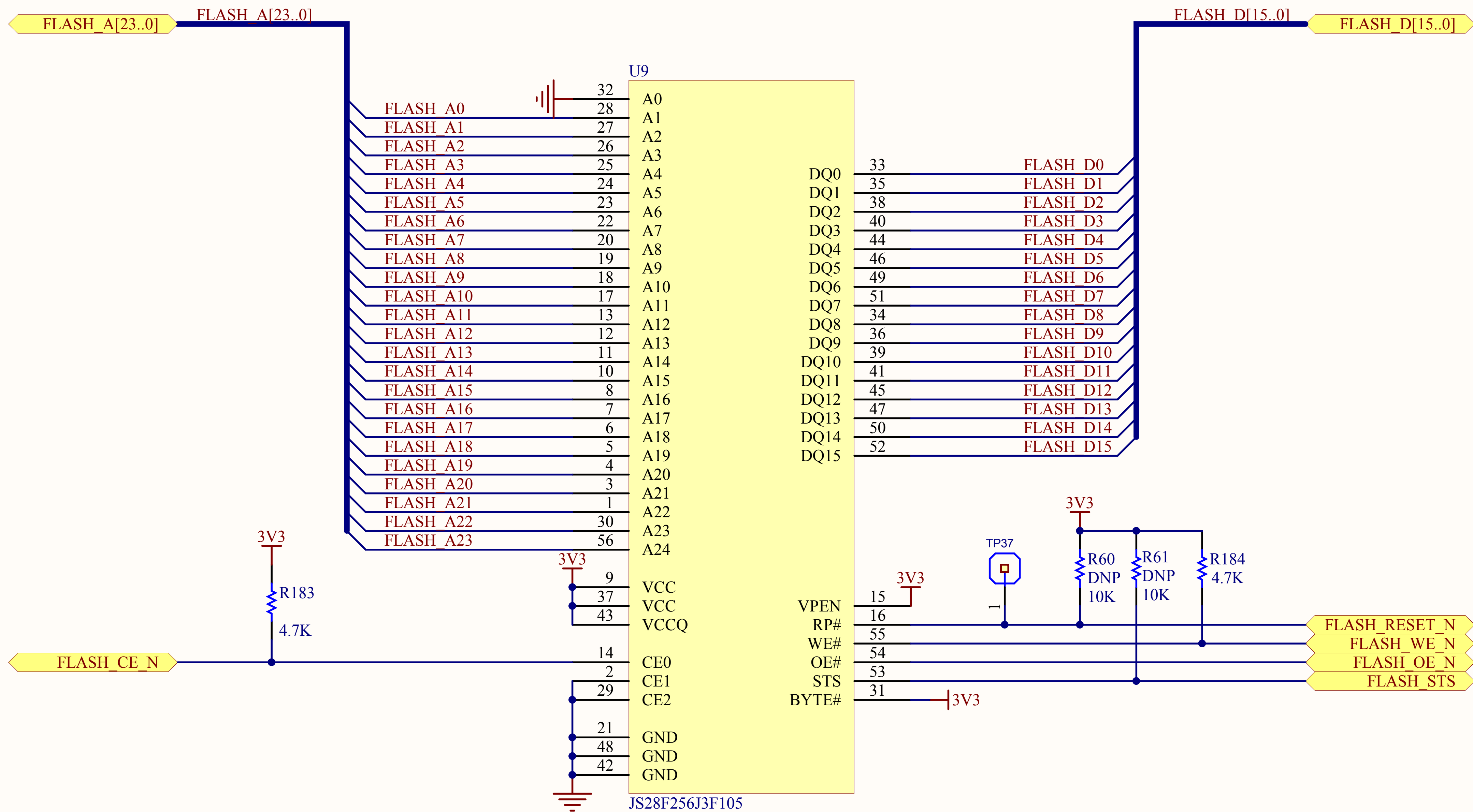


About the numbering: there used to be also SW1 and SW3 (and BTN1/3), but we found that one button is all we need, and removed them.

Title Milkymist One - Misc.		
Size A4	Number	Revision R4
Date:	2012/3/5	Sheet of
File:	D:\rc4_design\Misc.SchDoc	Drawn By:



Title Milkymist One - MIDI, DMX512 and IR		
Size A4	Number	Revision R4
Date: 2012/3/5	Sheet of	
File: D:\rc4_design\MiscControl.SchDoc	Drawn By:	



Title Milkymist One - NOR flash		
Size A4	Number	Revision R4
Date:	2012/3/5	Sheet of
File:	D:\rc4_design\NORFlash.SchDoc	Drawn By:

A

B

C

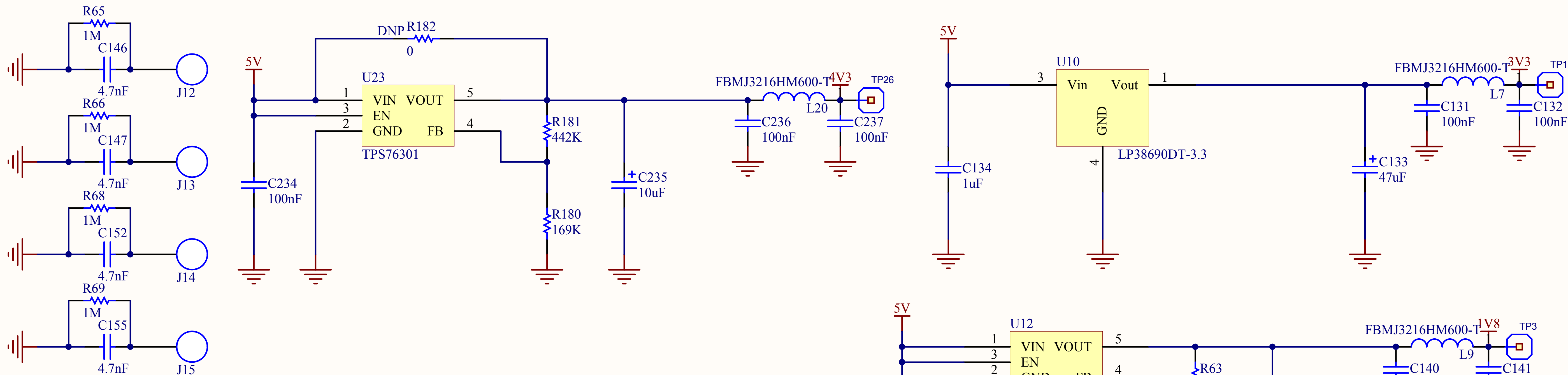
D

A

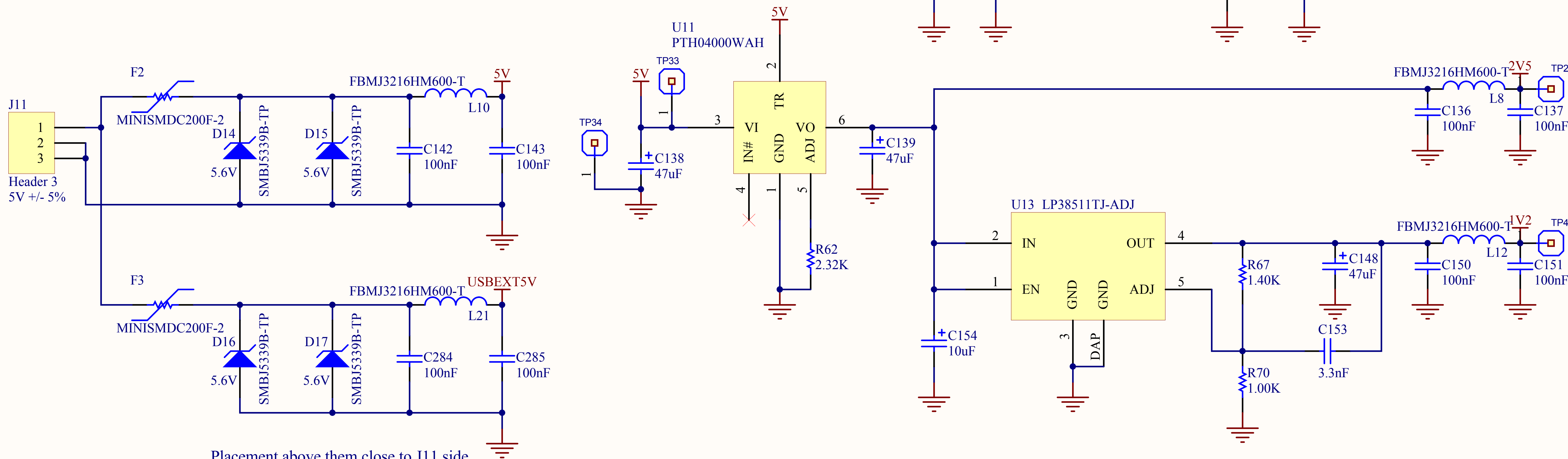
B

C

D

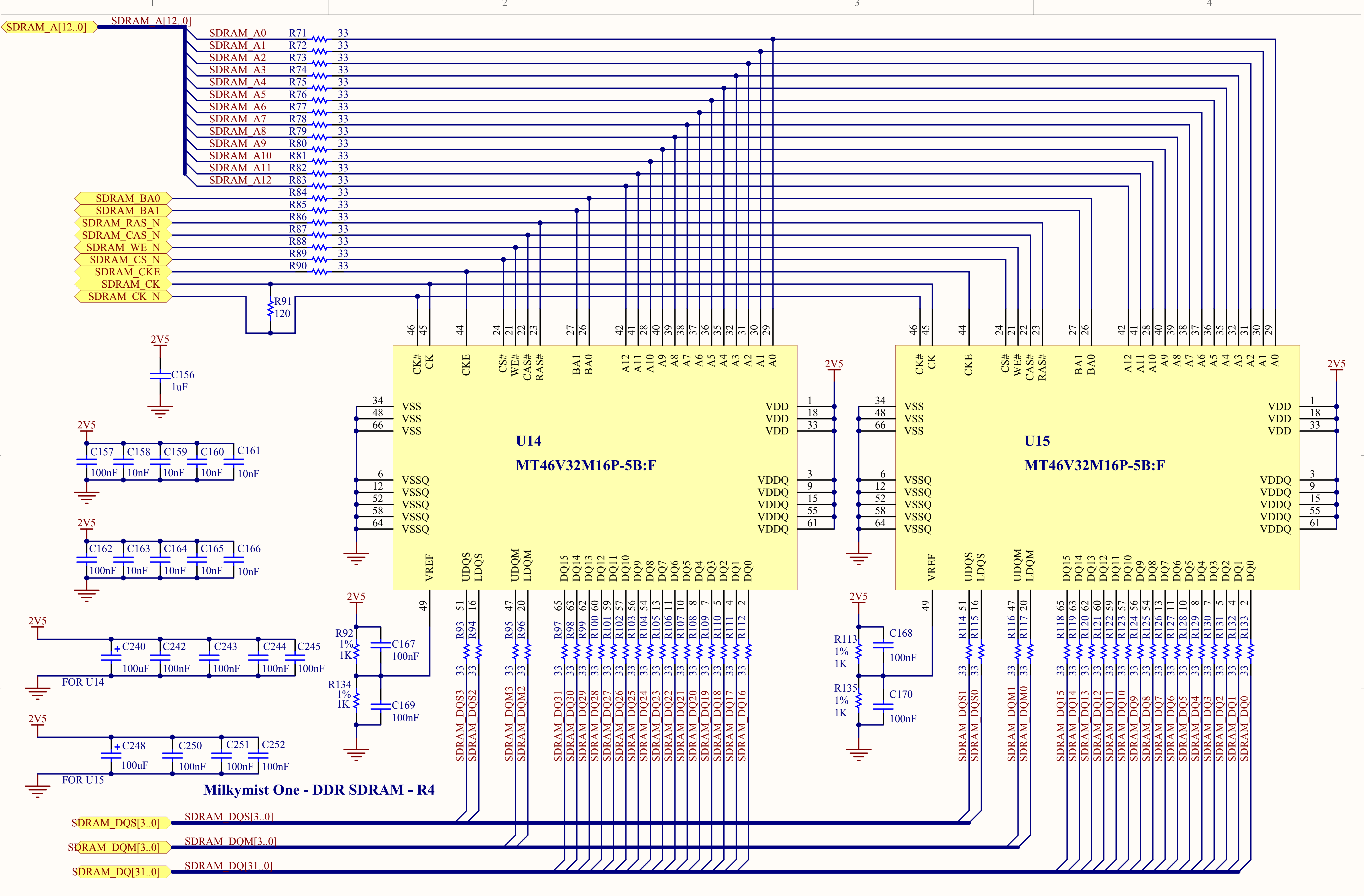


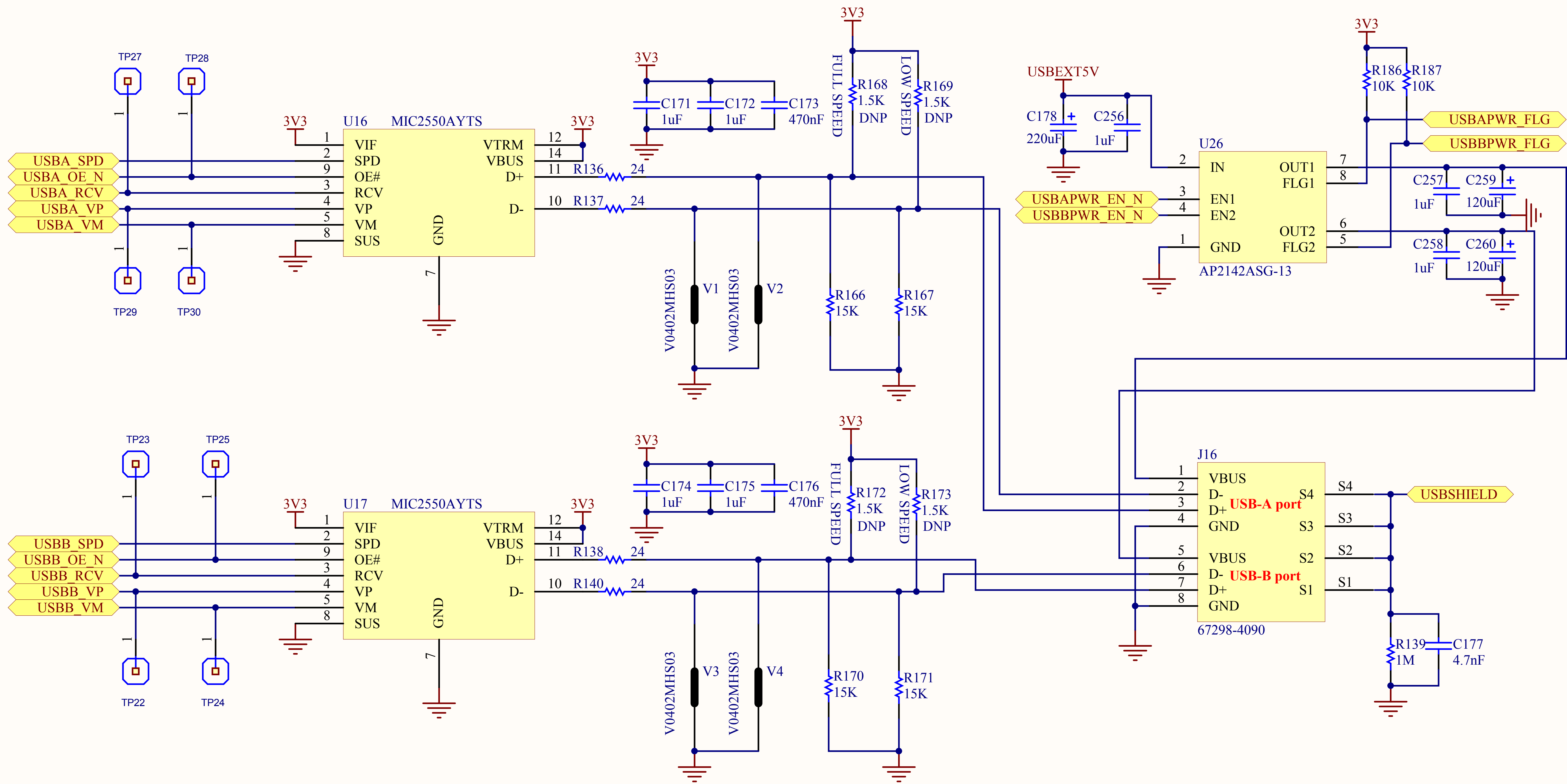
J12~15 are the mechanical mounting holes at each corner of PCB.



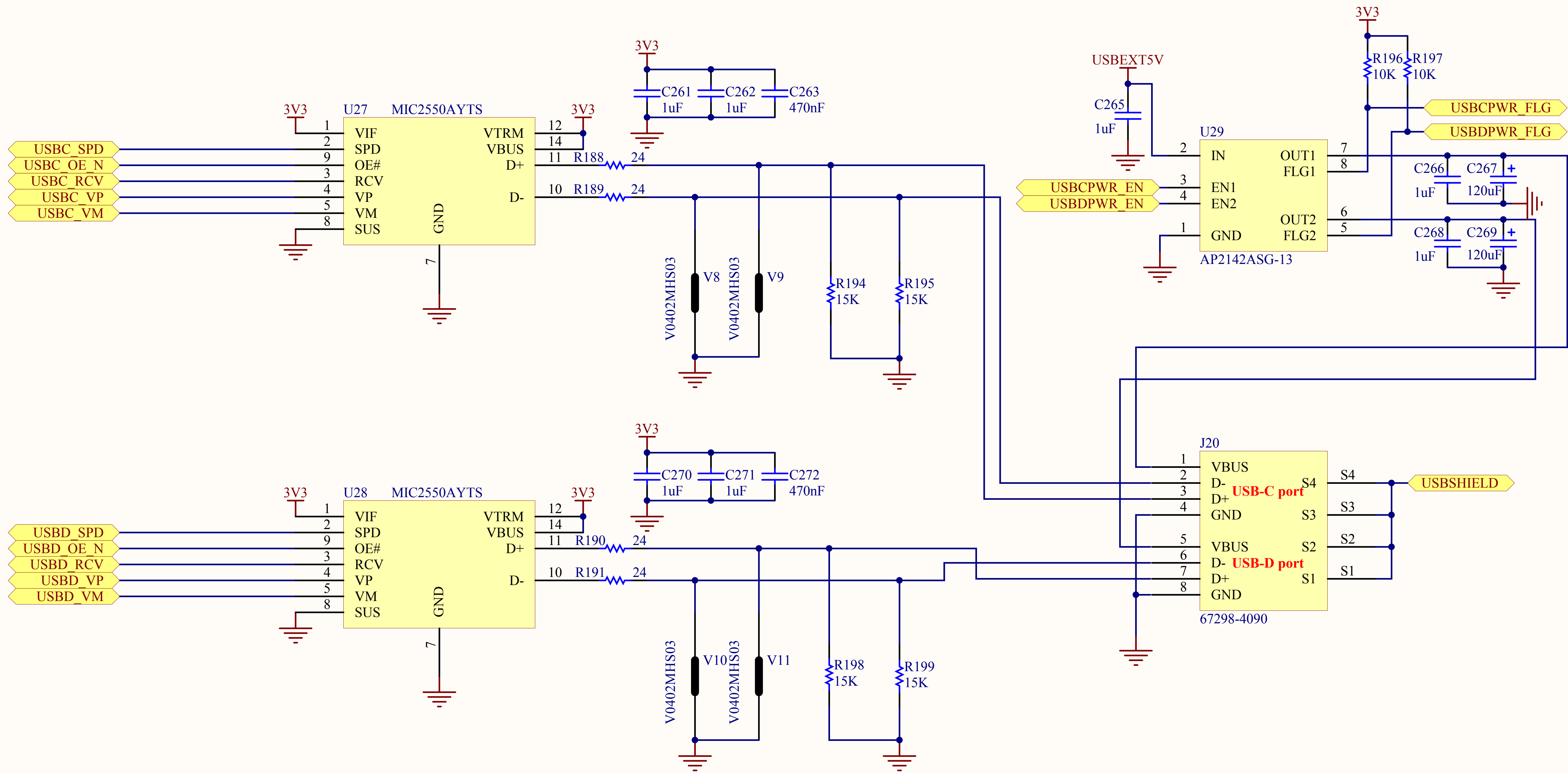
Placement above them close to J11 side.

Title Milkymist One - Power Supply		
Size A4	Number	Revision R4
Date:	2012/3/5	Sheet of
File:	D:\rc4_design\Power.SchDoc	Drawn By:

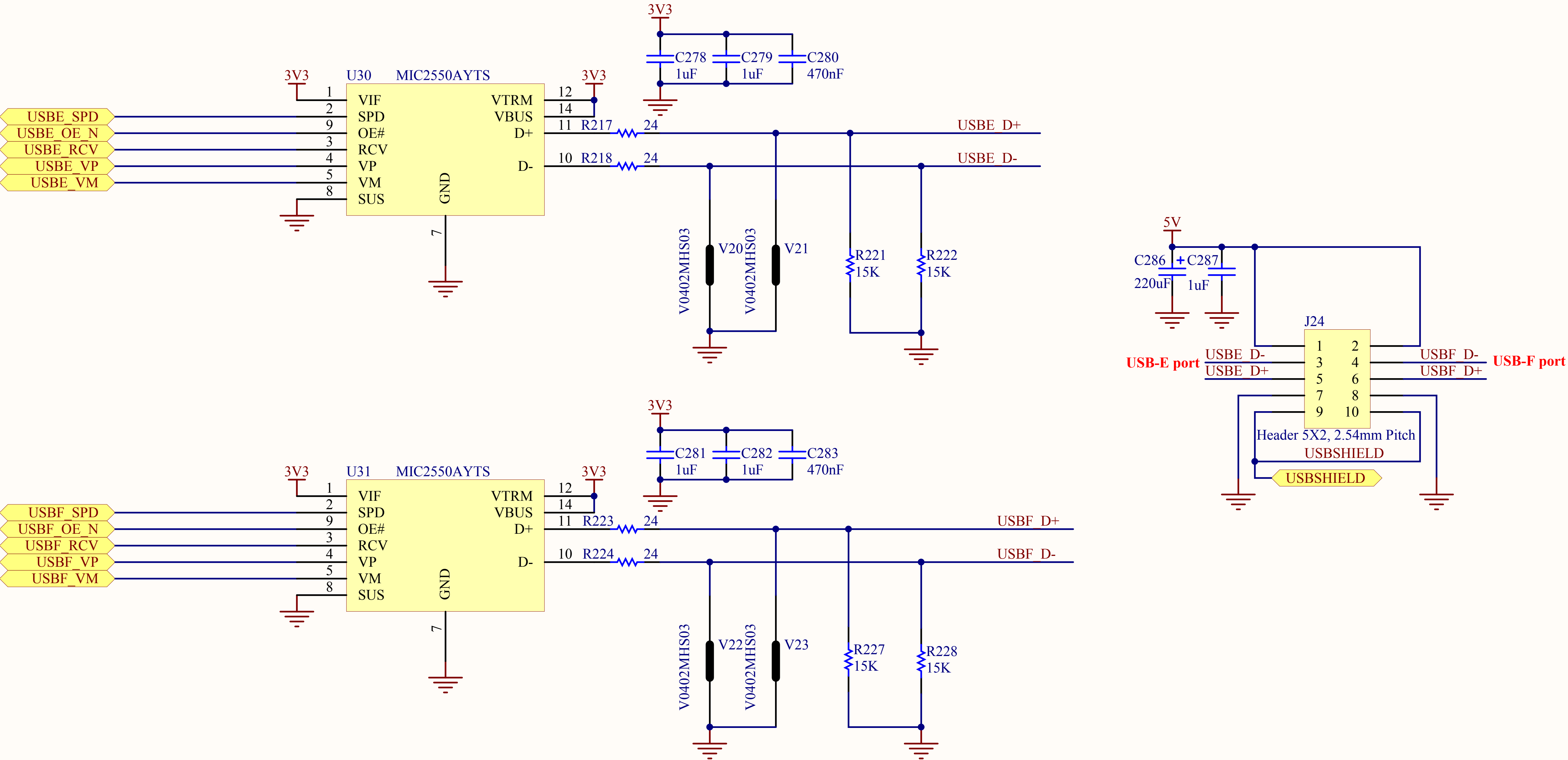




Title Milkymist One - USB A/B port		
Size A4	Number	Revision R4
Date:	2012/3/5	Sheet of
File:	D:\rc4_design\USBExtPorts1.SchDoc	Drawn By:



Title Milkymist One - USB C/D port		
Size A4	Number	Revision R4
Date:	2012/3/5	Sheet of
File:	D:\rc4_design\USBExtPorts2.SchDoc	Drawn By:



Title Milkymist One - USB External E/F port		
Size A4	Number	Revision R4
Date:	2012/3/5	Sheet of
File:	D:\rc4_design\USBIntPorts.SchDoc	Drawn By:

