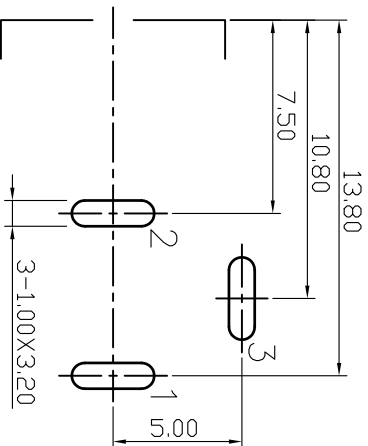
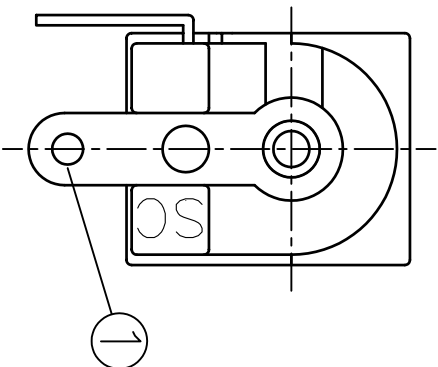
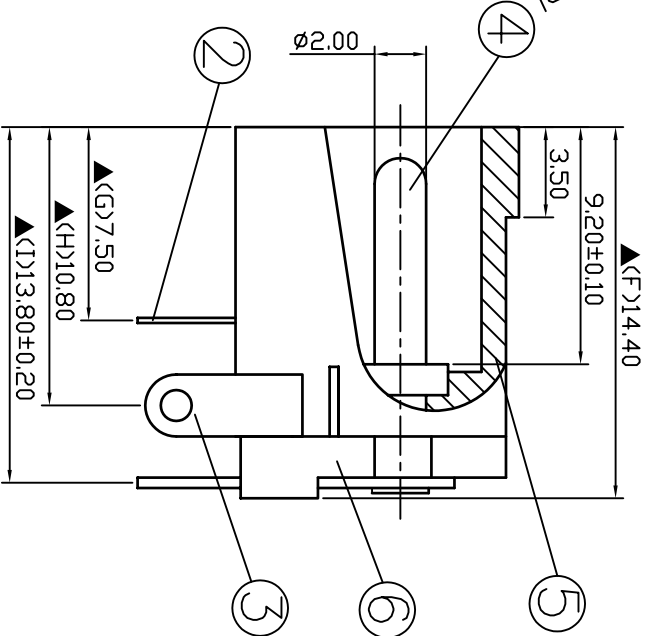
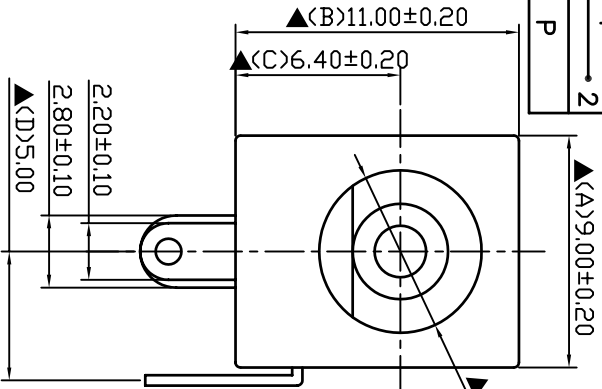



SCHEMATIC	
MODEL NO	P



Pin Hole Layout
(Jack Bottom View)

NO.	Description	Material	Q 'TY	Finish
6.	Cover	PBT+30% Fibre Glass	1	Black Color
5.	Housing	PBT+30% Fibre Glass	1	Black Color
4.	Pin(2.0ø)	Copper	1	Nickel Plated
3.	Break Terminal	0.4T Brass	1	Silver Plated
2.	Sleeve Spring	0.2T Phosphor Bronze	1	Silver Plated
1.	Pin Terminal	0.4T Brass	1	Silver Plated

<div>  <div> <div>S.C.</div> <div>PRECISION INDUSTRIAL CO., LTD.</div> </div> </div>	PART NAME : DC POWER JACK	PART NUMBER: SCD441CPS011B00G	DATE	DWN	CHKD	APVD	MANAGER
	TOLERANCE : ±0.3mm UNLESS OTHERWISE SPECIFIED		01.04.2011				

SPECIFICATIONS:

Contact Resistance : 30mΩ max
Current Rating : Max 2.0A , 16V DC
Insulation Resistance : 100MΩ min. at DC 500V
Dielectric Withstand Voltage : AC 500V for one minute
Remark: ▲: The Most Important Dimension

RoHS Compliant	For Reference 僅供參考
-------------------	-----------------------